

WAAS CH 82327 W36A	APP CRS 002°	Rwy Idg TDZE 681 Apt Elev 698	4000 681 698
--	------------------------	---	---

RNAV (GPS) RWY 36

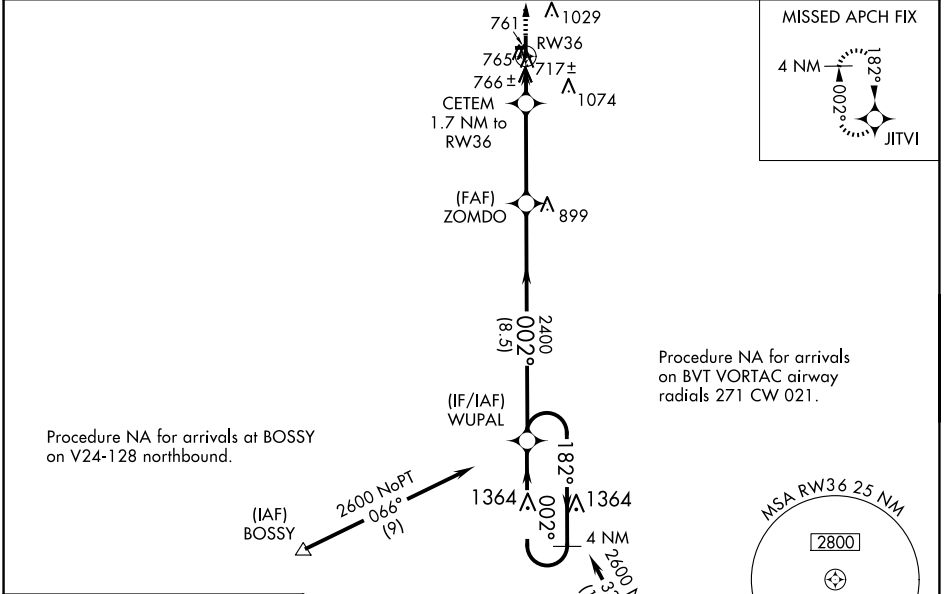
JASPER COUNTY (R.Z.L.)

RNP APCH.

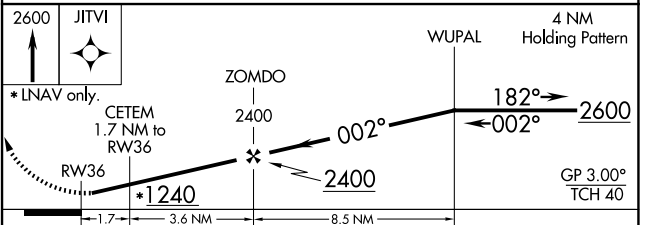
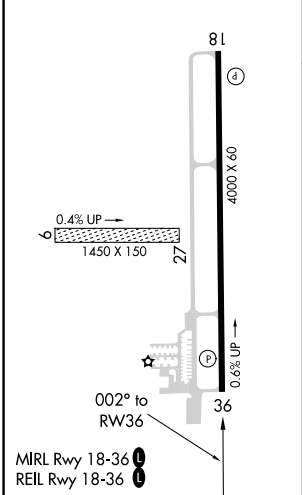
⚠ Baro-VNAV NA when using Knox altimeter setting. For uncompensated Baro-VNAV systems, LNAV/VNAV NA below -22°C or above 54°C. When local altimeter setting not received use Knox altimeter setting and increase all DA 78 feet and all MDA 80 feet, increase LPV and LNAV/VNAV all Cals visibility 1/8 mile and LNAV and Circling Cat C visibility 1/4 mile. Rwy 36 helicopter visibility reduction below 1 SM NA. Circling NA to Rwy's 9 and 27.

MISSED APPROACH:
Climb to 2600 direct
JITVI and hold.

AWOS-3P 119.175	CHICAGO CENTER 132.5 284.7	UNICOM 122.8 (CTAF) 0
---------------------------	--------------------------------------	--



ELEV 698	TDZE 681
----------	----------



CATEGORY	A	B	C	D
LPV DA		931-1 250 (300-1)		NA
LNAV/ VNAV DA		947-1 266 (300-1)		NA
LNAV MDA		1020-1 339 (400-1)		NA
CIRCLING	1120-1 422 (500-1)	1380-1 682 (700-1)	1440-2¼ 742 (800-2¼)	NA