

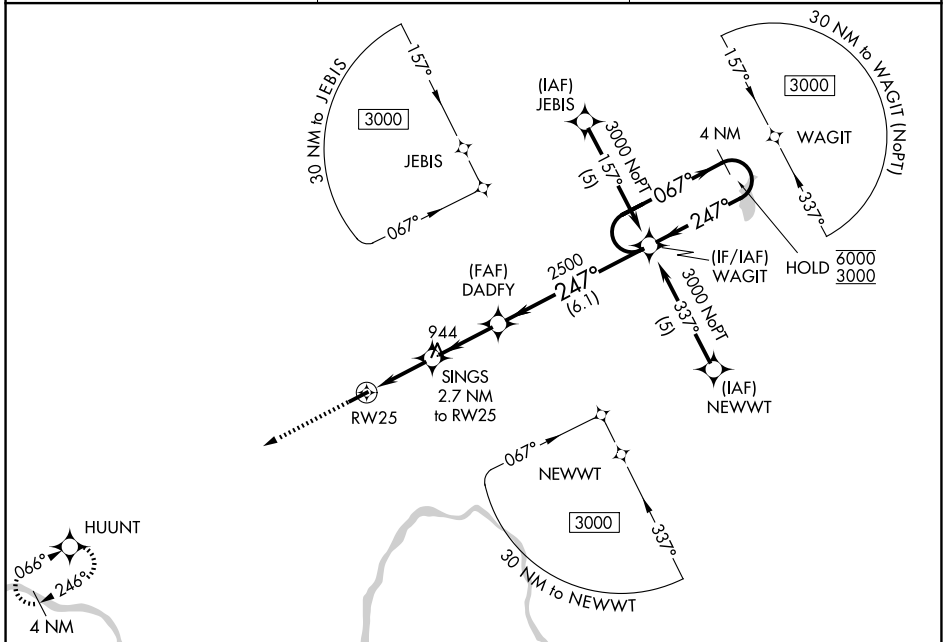
APP CRS <b>247°</b>	Rwy Ldg TDZE Apt Elev	<b>4033</b> <b>764</b> <b>775</b>
------------------------	-----------------------------	---

# RNAV (GPS) RWY 25

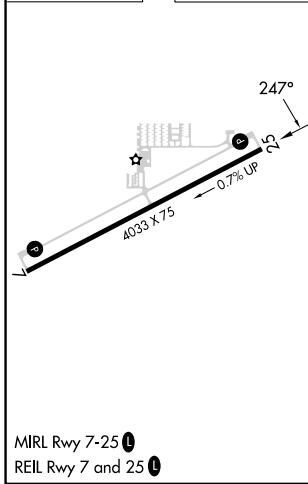
PAUL C MILLER/SPARTA (8D4)

RNP APCH - GPS.	<p><b>⚠</b> Rwy 25 helicopter visibility reduction below 3/4 SM NA. Circling Rwy 7 NA at night. VDP NA when using GRR altimeter setting. When local altimeter setting not received, use GRR altimeter setting and increase Circling Cat B MDA 20 feet.</p>	<p><b>MISSED APPROACH:</b> Climb to 3000 direct HUUNT and hold.</p>
-----------------	--	---

AWOS-3PT <b>126.65</b>	GREAT LAKES APP CON ★ <b>124.6 257.6</b>	UNICOM <b>122.8 (CTAF) 0</b>
---------------------------	---	---------------------------------



ELEV 775	TDZE 764
----------	----------



3000	HUUNT	Visual Segment - Obstacles.	4 NM Holding Pattern
		SINGS 2.7 NM to RW25	DADFY
		1.2 NM to RW25	WAGIT
		1.2 NM	1.4 NM
		2.7 NM	6.1 NM
		1640	2500
		067°	247°
		3000	3000

CATEGORY	A	B	C	D
LNAV MDA	1240-1	476 (500-1)	NA	
CIRCLING	1300-1 525 (600-1)	1340-1 565 (600-1)	NA	

EC-1, 16 APR 2026 to 14 MAY 2026

EC-1, 16 APR 2026 to 14 MAY 2026