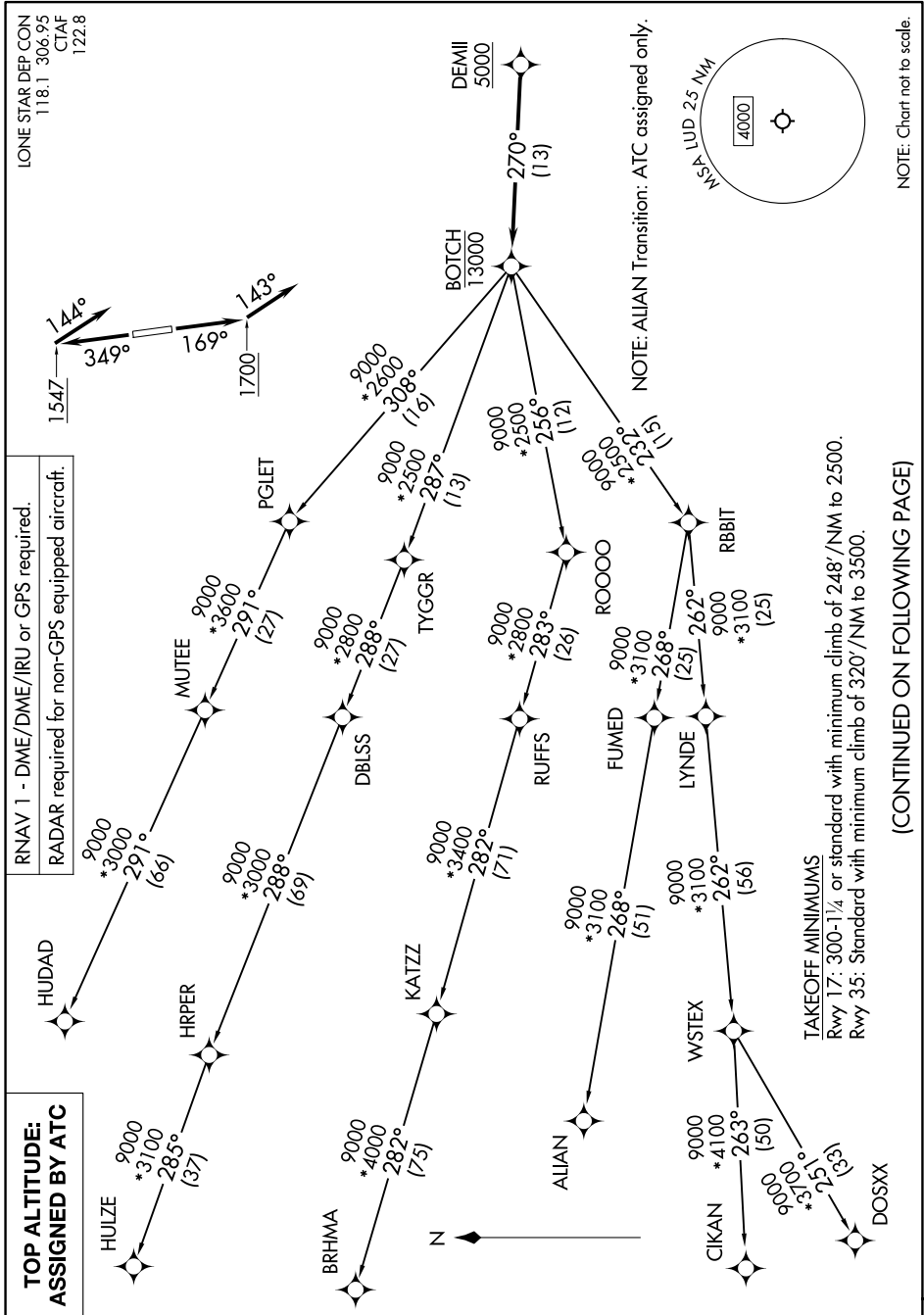


BOTCH ONE DEPARTURE (RNAV)



SC-2, 16 APR 2026 to 14 MAY 2026

SC-2, 16 APR 2026 to 14 MAY 2026

(CONTINUED ON FOLLOWING PAGE)

TAKEOFF MINIMUMS
 Rwy 17: 300-1/4 or standard with minimum climb of 248'/NM to 2500.
 Rwy 35: Standard with minimum climb of 320'/NM to 3500.

BOTCH ONE DEPARTURE (RNAV)