

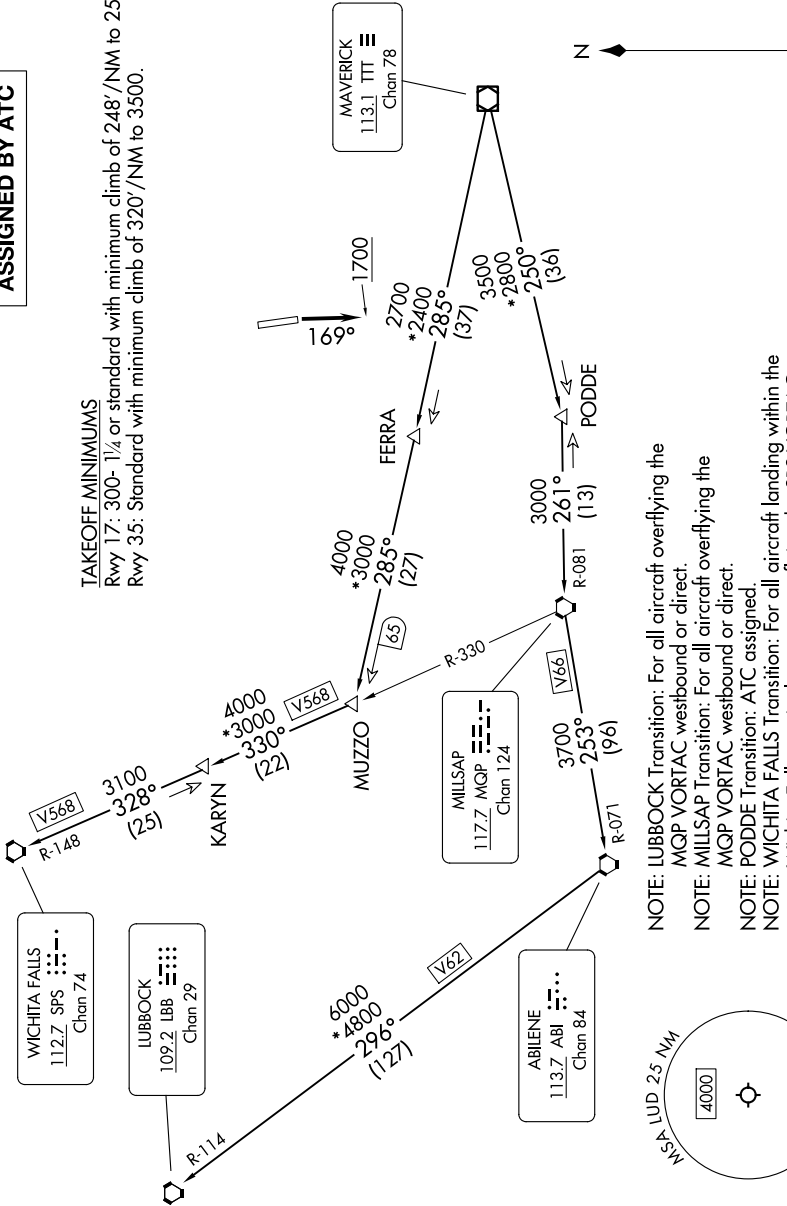
# KINGDOM FIVE DEPARTURE

LONE STAR DEP CON  
118.1 306.95  
CTAF  
122.8

**TOP ALTITUDE:  
ASSIGNED BY ATC**

RADAR and DME required.

**TAKEOFF MINIMUMS**  
Rwy 17: 300- 1/4 or standard with minimum climb of 248'/NM to 2500.  
Rwy 35: Standard with minimum climb of 320'/NM to 3500.



- NOTE: LUBBOCK Transition: For all aircraft overlying the MQP VORTAC westbound or direct.
- NOTE: MILLSAP Transition: For all aircraft overlying the MQP VORTAC westbound or direct.
- NOTE: PODDE Transition: ATC assigned.
- NOTE: WICHITA FALLS Transition: For all aircraft landing within the Wichita Falls terminal area or overlying the SPS VORTAC.
- NOTE: For all aircraft requesting 17000 and below.

NOTE: Chart not to scale.

(CONTINUED ON FOLLOWING PAGE)

# KINGDOM FIVE DEPARTURE