

# KUSSO TWO DEPARTURE (RNAV)

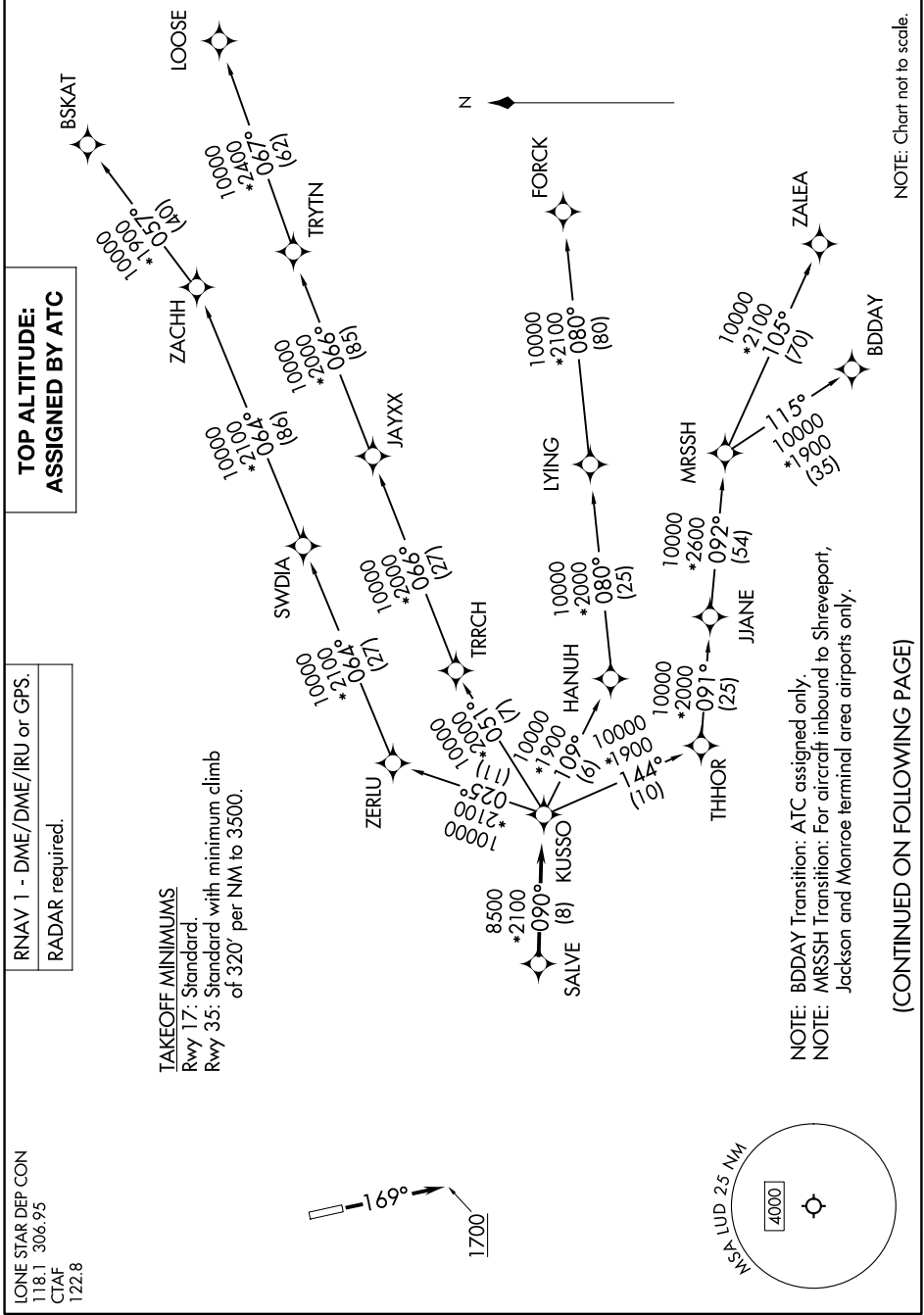
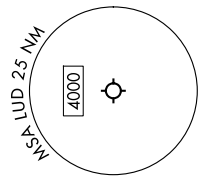
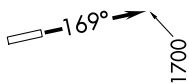
SC-2, 16 APR 2026 to 14 MAY 2026

LONE STAR DEP CON  
118.1 306.95  
CTAF  
122.8

RNAV 1 - DME/DME/IRU or GPS.  
RADAR required.

**TOP ALTITUDE:  
ASSIGNED BY ATC**

**TAKEOFF MINIMUMS**  
Rwy 17: Standard  
Rwy 35: Standard with minimum climb  
of 320' per NM to 3500.



NOTE: BDDAY Transition: ATC assigned only.  
NOTE: MRSSH Transition: For aircraft inbound to Shreveport,  
Jackson and Monroe terminal area airports only.

(CONTINUED ON FOLLOWING PAGE)

NOTE: Chart not to scale.

SC-2, 16 APR 2026 to 14 MAY 2026

# KUSSO TWO DEPARTURE (RNAV)