

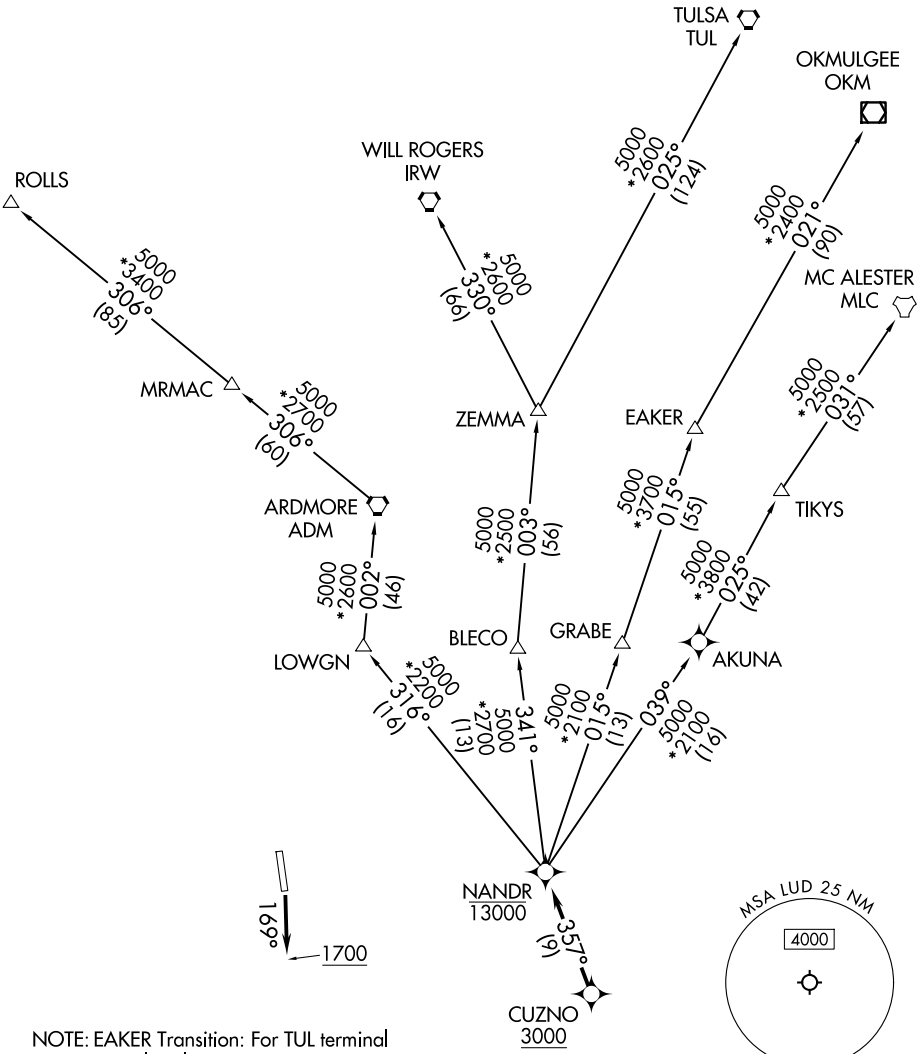
# NANDR THREE DEPARTURE (RNAV)

LONE STAR DEP CON  
118.1 306.95

RNAV 1 - DME/DME/IRU or GPS.

RADAR required.

**TOP ALTITUDE:  
ASSIGNED BY ATC**



SC-2, 16 APR 2026 to 14 MAY 2026

SC-2, 16 APR 2026 to 14 MAY 2026

NOTE: EAKER Transition: For TUL terminal arrivals only.

NOTE: TULSA Transition: For all aircraft overflying TUL VORTAC.

NOTE: Aircraft arriving to the Oklahoma City terminal area, file and expect the ZEMMA enroute transition.

**TAKEOFF MINIMUMS**  
Rwy 17: 300-1¼ or standard with minimum climb of 248'/NM to 2500.

NOTE: Chart not to scale.

(CONTINUED ON FOLLOWING PAGE)

# NANDR THREE DEPARTURE (RNAV)