

APP CRS	Rwy Idg	4000
052°	TDZE	990
	Apt Elev	995

RNAV (GPS) RWY 5

TRI-STATE STEUBEN COUNTY (ANQ)

RNP APCH.

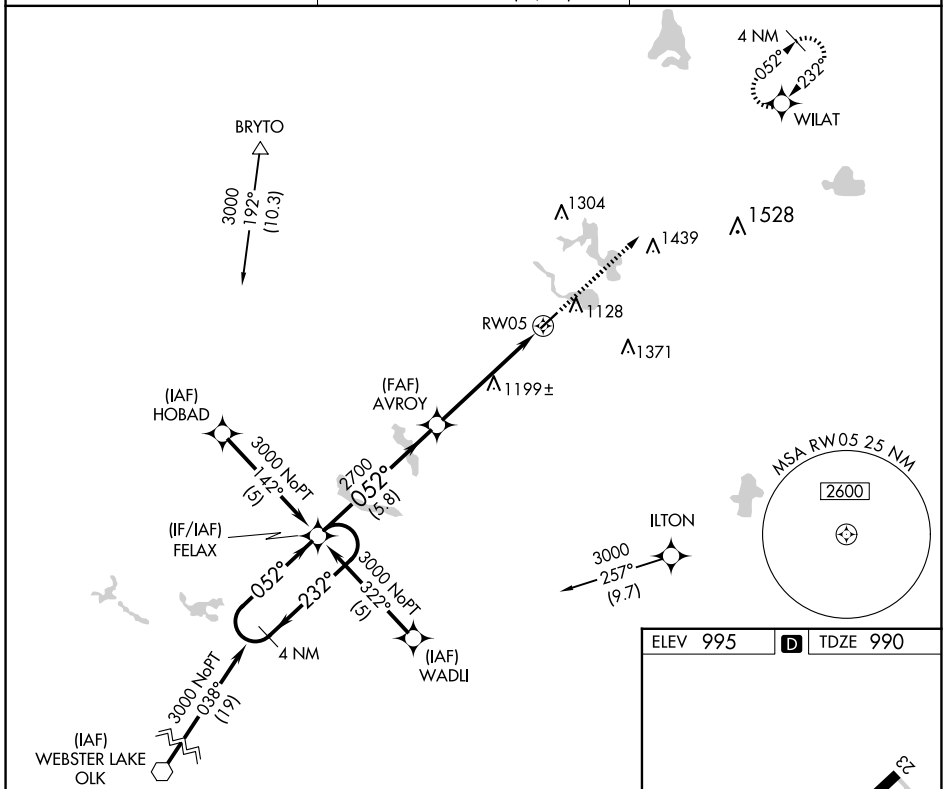
- For uncompensated Baro-VNAV systems, LNAV/VNAV NA below -16°C or above 54°C.
- Rwy 5 helicopter visibility reduction below 3/4 SM NA.

MISSED APPROACH:
Climb to 3000 direct
WILAT and hold.

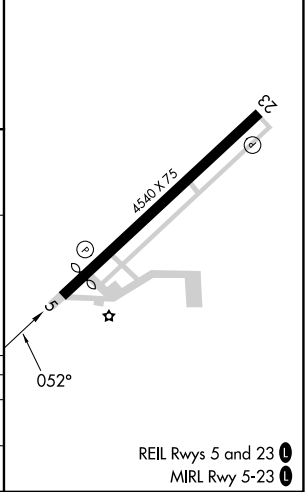
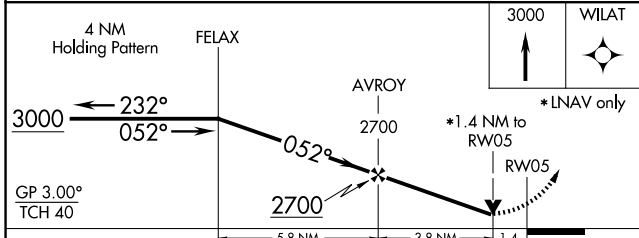
AWOS-3
118.175

FORT WAYNE APP CON
127.2 284.6 (SW/NW)
132.15 284.6 (SE/NE)

UNICOM
123.075 (CTAF)



ELEV 995		TDZE 990
----------	--	----------



CATEGORY	A	B	C	D
LNAV/VNAV DA	1474-1 3/4		484 (500-1 3/4)	NA
LNAV MDA	1460-1	470 (500-1)	1460-1 1/2 470 (500-1 1/2)	NA

REIL Rws 5 and 23
MIRL Rwy 5-23

EC-2, 16 APR 2026 to 14 MAY 2026

EC-2, 16 APR 2026 to 14 MAY 2026