

APP CRS	Rwy Idg	3280
134°	TDZE	1161
	Apt Elev	1174

RNAV (GPS) RWY 13

HARRISON COUNTY (8G6)

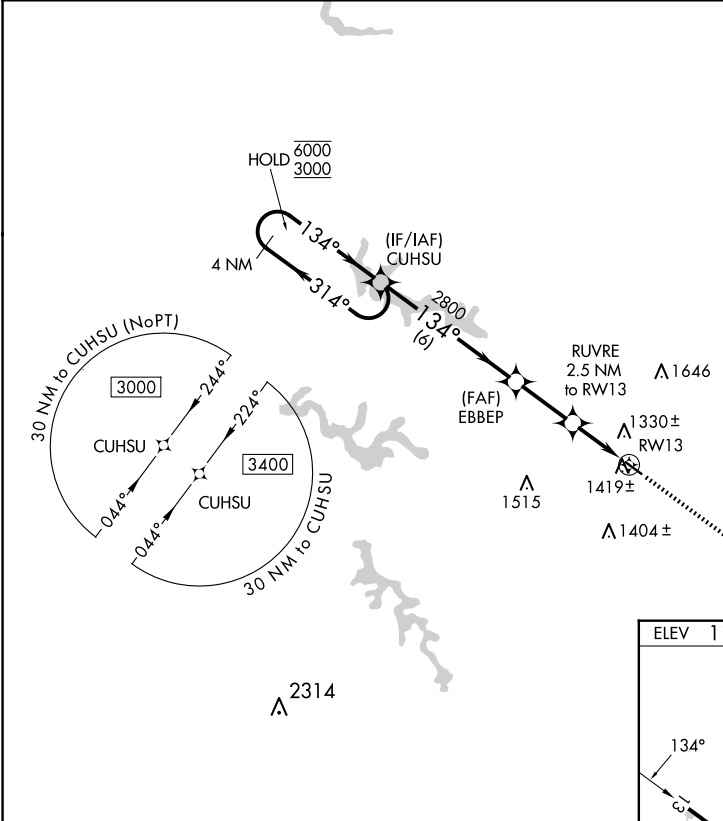
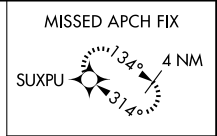
RNP APCH.
 ▽ Rwy 13 helicopter visibility reduction below 1 SM NA. Use Wheeling altimeter setting; when not received, use Washington altimeter setting and increase all MDA 40 feet. Procedure NA at night.
 ▲ NA

MISSED APPROACH: Climb to 3100 direct SUXPU and hold.

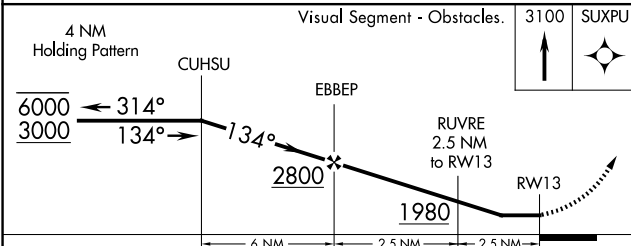
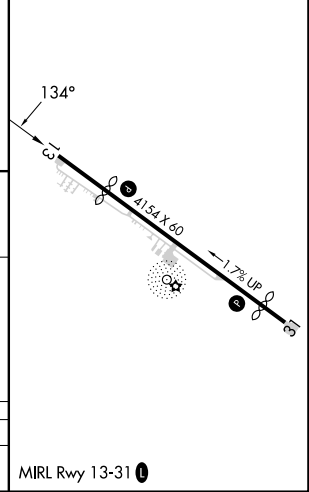
HLG ASOS	127.375
----------	----------------

CLEVELAND CENTER	126.95 239.30
------------------	----------------------

UNICOM	122.8 (CTAF) 0
--------	-----------------------



ELEV 1174	TDZE 1161
-----------	-----------



CATEGORY	A	B	C	D
LNAV MDA	1720-1	559 (600-1)	NA	

MIRL Rwy 13-31 0

EC-2, 16 APR 2026 to 14 MAY 2026

EC-2, 16 APR 2026 to 14 MAY 2026