

WAAS CH <b>81808</b> <b>W18A</b>	APP CRS <b>181°</b>	Rwy Idg TDZE Apt Elev	<b>6101</b> <b>1414</b> <b>1421</b>
--	------------------------	-----------------------------	---

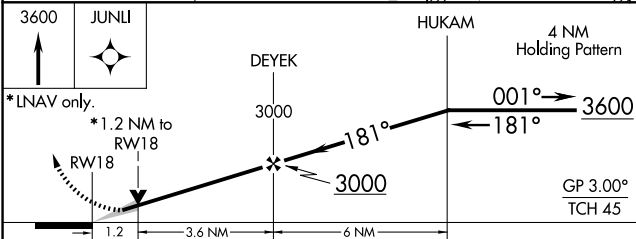
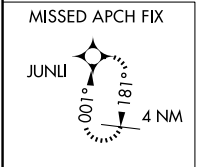
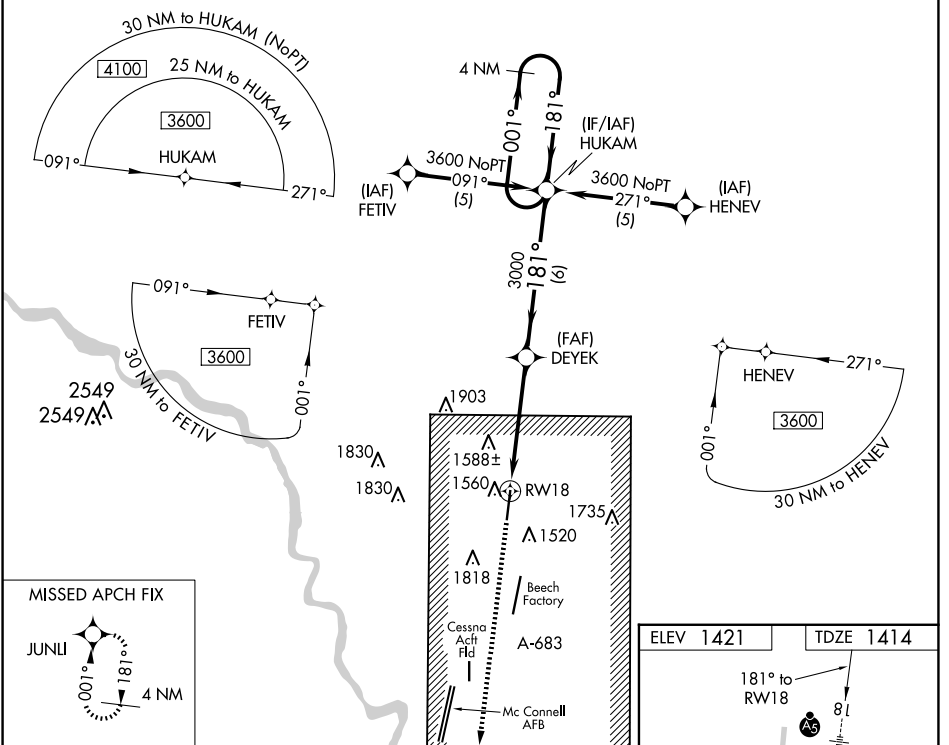
# RNAV (GPS) RWY 18

COLONEL JAMES JABARA (A.A.O)

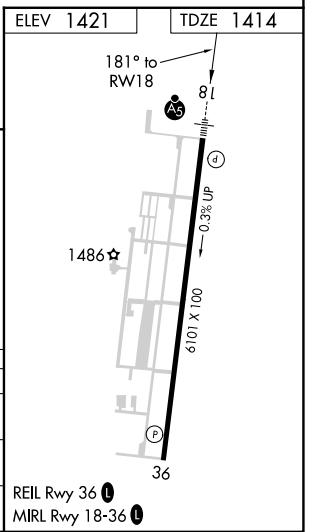
**⚠** For inoperative MALSR, increase LPV all Cats visibility to 1 mile and LNAV Cat D visibility to 1 1/4. DME/DME RNP-0.3 NA. When local altimeter setting not received, use Wichita Dwight D Eisenhower NHI altimeter setting: increase LPV DA to 1720; increase all MDAs 40 feet and Circling Cat D visibility 1/4 SM.

**MALSR**  
MISSED APPROACH: Climb to 3600 direct JUNLI and hold.

ASOS <b>134.025</b>	WICHITA APP CON <b>134.8 269.1</b>	CLNC DEL <b>125.0</b>	UNICOM <b>122.7 (CTAF) ①</b>
------------------------	---------------------------------------	--------------------------	---------------------------------



CATEGORY	A	B	C	D
LPV DA	1680-1/2 266 (300-1/2)			
LNAV MDA	1820-1/2	406 (400-1/2)	1820-3/4 406 (400-3/4)	1820-1 406 (400-1)
CIRCLING	1880-1 459 (500-1)	1940-1 519 (600-1)	2120-2 699 (700-2)	2220-2 1/2 799 (800-2 1/2)



NC-2, 16 APR 2026 to 14 MAY 2026

NC-2, 16 APR 2026 to 14 MAY 2026