

APP CRS	Rwy Idg	3558
229°	TDZE	896
	Apt Elev	896

RNAV (GPS) RWY 23

ALEXANDER SALAMON (A.M.T.)

RNP APCH - GPS.

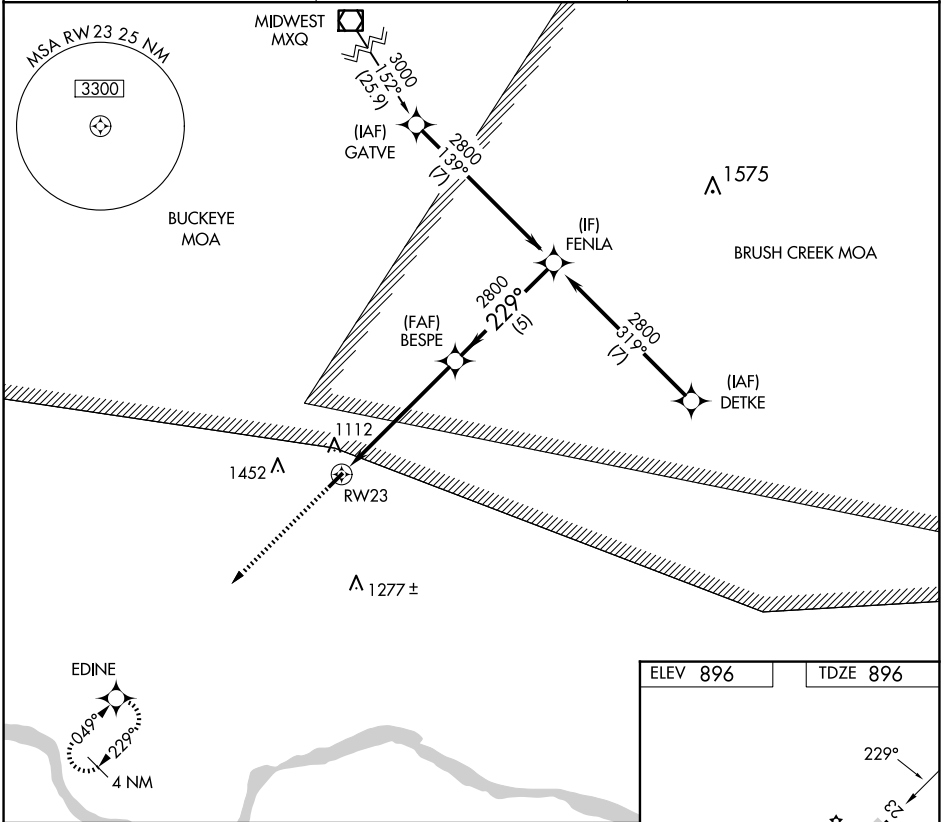
Procedure NA at night. Rwy 23 helicopter visibility reduction below 1 SM NA.
 NA Use Flemingsburg, Kentucky altimeter setting.

MISSED APPROACH: Climb to 2800 direct EDINE and hold.

FGX AWOS-3
118.125

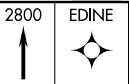
INDIANAPOLIS CENTER
135.575 290.5

UNICOM
122.8 (CTAF)

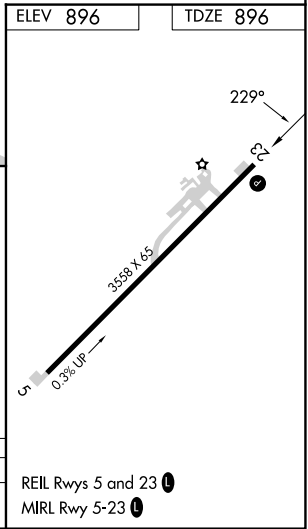
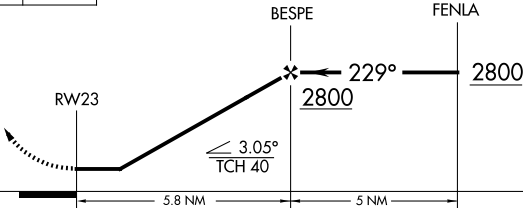


EC-2, 16 APR 2026 to 14 MAY 2026

EC-2, 16 APR 2026 to 14 MAY 2026



VGSI and descent angles not coincident (VGSI Angle 3.30/TCH 25).



CATEGORY	A	B	C	D
LNAV MDA	1460-1	564 (600-1)	1460-1½ 564 (600-1½)	NA

REIL Rwy 5 and 23
MIRL Rwy 5-23