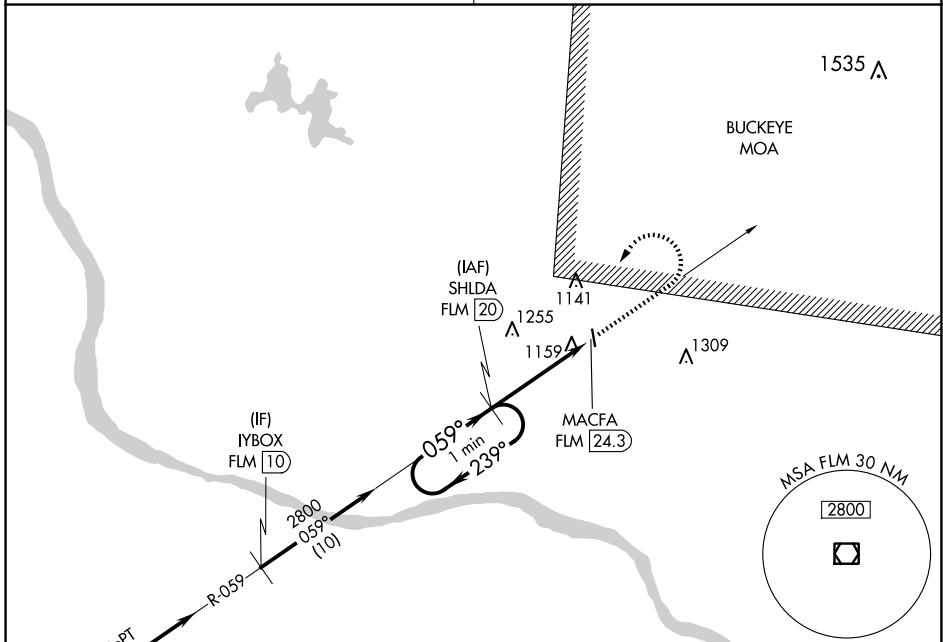


VOR/DME FLM <b>117.0</b> Chan <b>117</b>	APP CRS <b>059°</b>	Rwy Idg TDZE Apt Elev	<b>N/A</b> <b>N/A</b> <b>958</b>
--	------------------------	-----------------------------	--

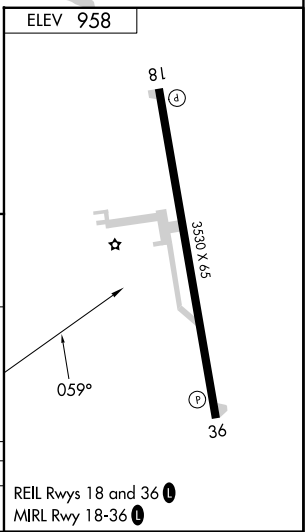
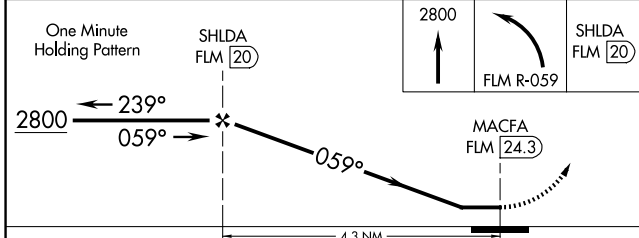
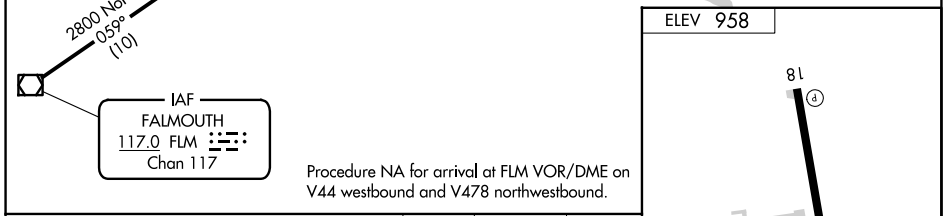
**VOR/DME-A**  
BROWN COUNTY (GEO)

<p>▼ Use Cincinnati/Northern Kentucky Intl, KY altimeter setting. Procedure NA at night. Helicopter visibility reduction below 1 SM NA.</p> <p>▲ NA</p>	<p>MISSED APPROACH: Climb to 2800 then left turn via FLM VOR/DME R-059 to SHLDA 20 DME and hold.</p>
<p>INDIANAPOLIS CENTER <b>135,575 290.5</b></p>	<p>CTAF <b>122.9</b></p>



IAF  
FALMOUTH  
117.0 FLM  
Chan 117

Procedure NA for arrival at FLM VOR/DME on V44 westbound and V478 northwestbound.



CATEGORY	A	B	C	D
CIRCLING	1700-1 742 (800-1)	1700-1¼ 742 (800-1¼)	1700-2¼ 742 (800-2¼)	NA

REIL Rwy 18 and 36  
MIRL Rwy 18-36

EC-2, 16 APR 2026 to 14 MAY 2026

EC-2, 16 APR 2026 to 14 MAY 2026