

WAAS CH <b>65999</b> W05A	APP CRS <b>053°</b>	Rwy Ldg 6007 TDZE 700 Apt Elev 700
---------------------------------	------------------------	---

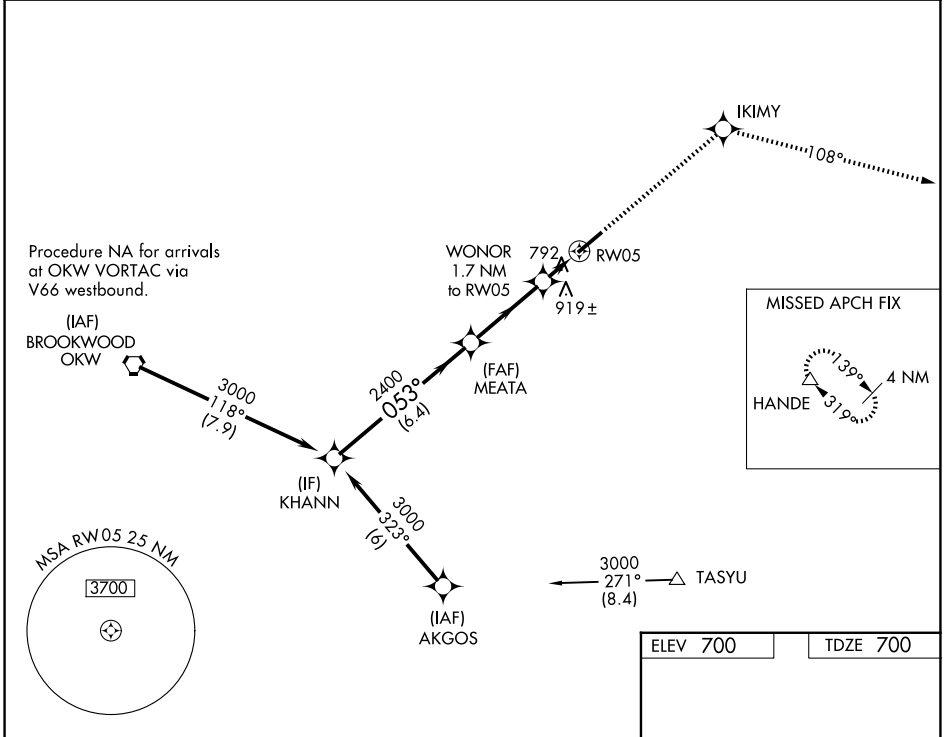
# RNAV (GPS) RWY 5

BESSEMER NTL (EKY)

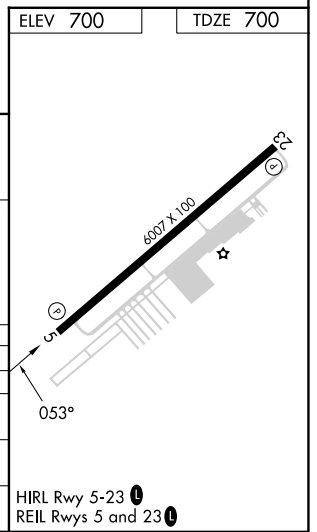
**NA** Baro-VNAV NA when using Alabaster altimeter setting. For uncompensated Baro-VNAV systems, LNAV/VNAV NA below -16°C (4°F) or above 54°C (130°F). DME/DME RNP-0.3 NA. When local altimeter setting not received, use Alabaster altimeter setting and increase LPV DA to 941 feet, LNAV/VNAV DA to 1285 feet, and all MDAs 60 feet; increase Circling Cat D visibility ¼ SM.

**MISSED APPROACH:** Climb to 4000 direct IKIMY and on track 108° to HANDE and hold.

AWOS-3PT <b>118.825</b>	BIRMINGHAM APP CON <b>124.9 351.85</b>	CLNC DEL <b>123.75</b>	UNICOM <b>123.0 (CTAF) 0</b>
----------------------------	---	---------------------------	---------------------------------



Procedure Turn NA	KHANN	MEATA	IKIMY	tr 108°	HANDE
	3000	2400	4000		
	053°		WONOR 1.7 NM to RW05		* LNAV only
	2400	1300	RW05		
	6.4 NM	3.4 NM	1.7 NM		
CATEGORY	A	B	C	D	
LPV DA		900-3/4	200 (200-3/4)		
LNAV/VNAV DA		1244-2	544 (600-2)		
LNAV MDA	1160-1	460 (500-1)	1160-1 3/8 460 (500-1 3/8)	1160-1 1/2 460 (500-1 1/2)	
CIRCLING	1200-1	500 (500-1)	1220-1 1/2 520 (600-1 1/2)	1320-2 620 (700-2)	



SE-4, 16 APR 2026 to 14 MAY 2026

SE-4, 16 APR 2026 to 14 MAY 2026