

VORTAC OKW 111.0 Chan 47	APP CRS 076°	Rwy Ldg TDZE Apt Elev	6007 700 700
---------------------------------------	------------------------	-----------------------------	---

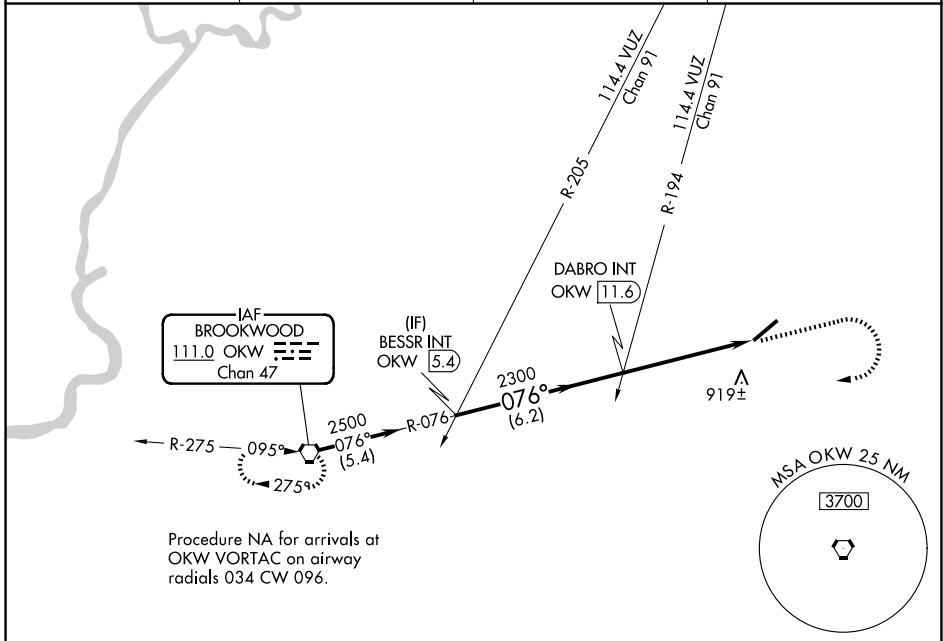
VOR RWY 5

BESSEMER NTL (EKY)

NA Inoperative table does not apply. When local altimeter setting not received, use Alabaster altimeter setting and increase all MDAs 60 feet; increase S-5 Cat C visibility $\frac{1}{8}$ SM and Circling Cat D visibility $\frac{1}{4}$ SM.

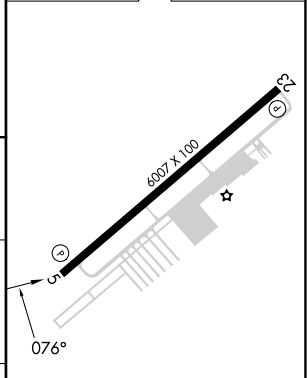
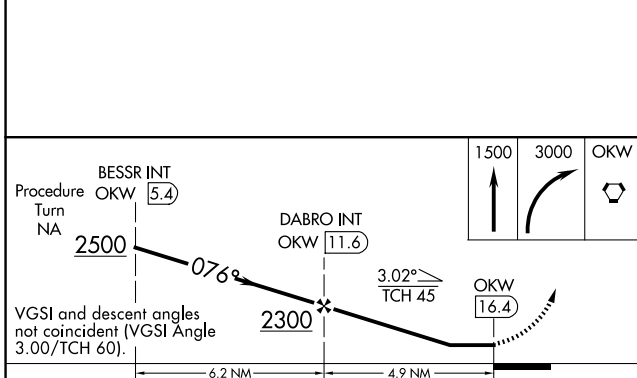
MISSED APPROACH: Climb to 1500 then climbing right turn to 3000 direct OKW VORTAC and hold.

AWOS-3PT 118.825	BIRMINGHAM APP CON 124.9 351.85	CLNC DEL 123.75	UNICOM 123.0 (CTAF)
----------------------------	---	---------------------------	-------------------------------



Procedure NA for arrivals at OKW VORTAC on airway radials 034 CW 096.

ELEV 700	TDZE 700
----------	----------



CATEGORY	A	B	C	D
S-5	1180-1 480 (500-1)		1180-1 $\frac{3}{8}$ 480 (500-1 $\frac{3}{8}$)	1180-1 $\frac{1}{2}$ 480 (500-1 $\frac{1}{2}$)
CIRCLING	1200-1 500 (500-1)		1220-1 $\frac{1}{2}$ 520 (600-1 $\frac{1}{2}$)	1320-2 620 (700-2)

HIRL Rwy 5-23		REIL Rwy 5 and 23	
FAF to MAP 4.9 NM			
Knots	60	90	120 150 180
Min:Sec	4:54	3:16	2:27 1:58 1:38

SE-4, 16 APR 2026 to 14 MAY 2026

SE-4, 16 APR 2026 to 14 MAY 2026