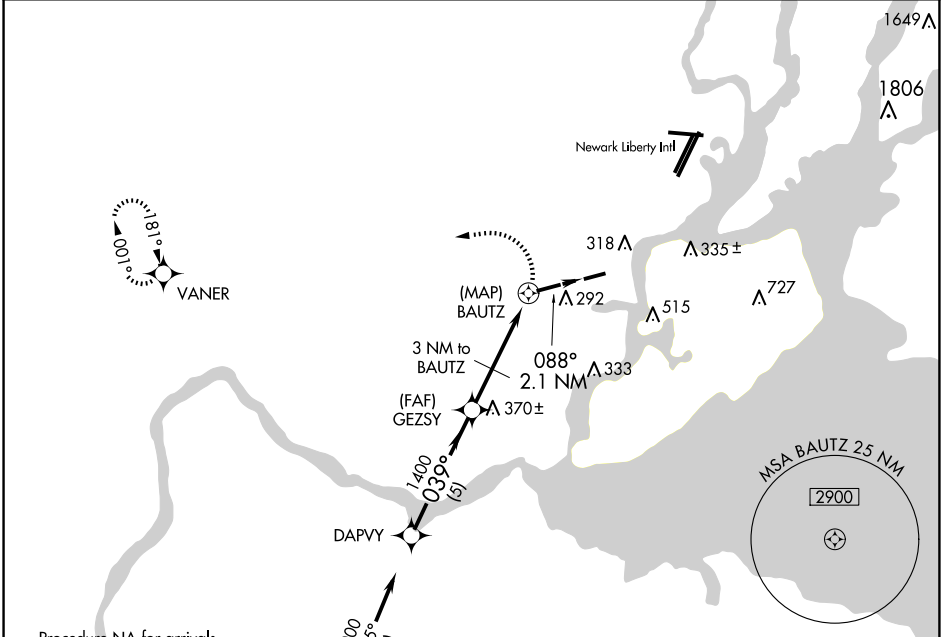


APP CRS 039°	Rwy Idg TDZE Apt Elev	N/A N/A 22
------------------------	-----------------------------	---------------------------------------

GPS-A
LINDEN (LDJ)

RNP APCH - GPS	MISSED APPROACH: Climbing left turn to 2000 direct VANER WP and hold.
<p>▼ When local altimeter setting not received, use Newark Liberty Intl altimeter setting. Helicopter visibility reduction below 1 SM NA. Procedure NA at night.</p> <p>▲ NA</p>	

AWOS-3 124.025	NEWARK APP CON 128.55 379.9	CLNC DEL 127.25	UNICOM 123.0 (CTAF) 0
--------------------------	---------------------------------------	---------------------------	---------------------------------

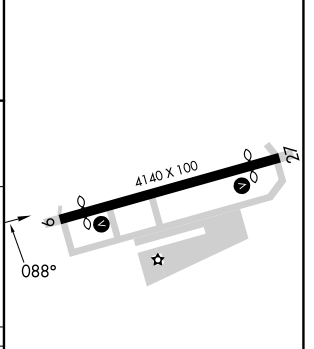
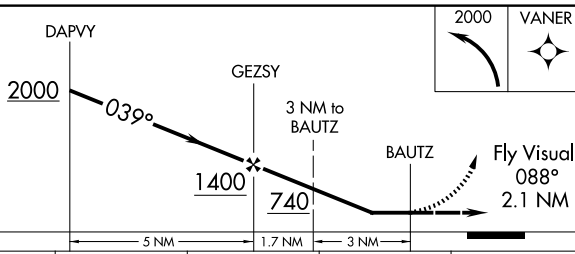


Procedure NA for arrivals at WARRD on V213 southbound and on TK502 westbound.

NE-2, 16 APR 2026 to 14 MAY 2026

NE-2, 16 APR 2026 to 14 MAY 2026

ELEV 22



CATEGORY	A	B	C	D
CIRCLING	620-2½	598 (600-2½)	880-2½ 858 (900-2½)	NA
NEWARK ALTIMETER SETTING MINIMUMS				
CIRCLING	640-2½	618 (700-2½)	900-2½ 878 (900-2½)	NA

MIRL Rwy 9-27 0
REIL Rwy 9 and 27 0