

WAAS CH 69326 W24A	APP CRS 238°	Rwy Ldg TDZE Apt Elev	5004 713 733
--	------------------------	-----------------------------	---

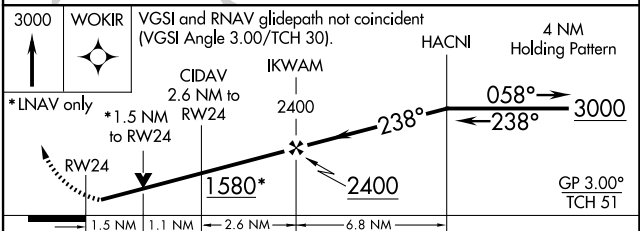
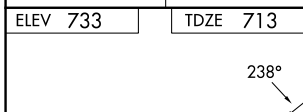
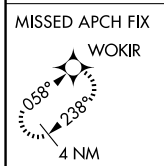
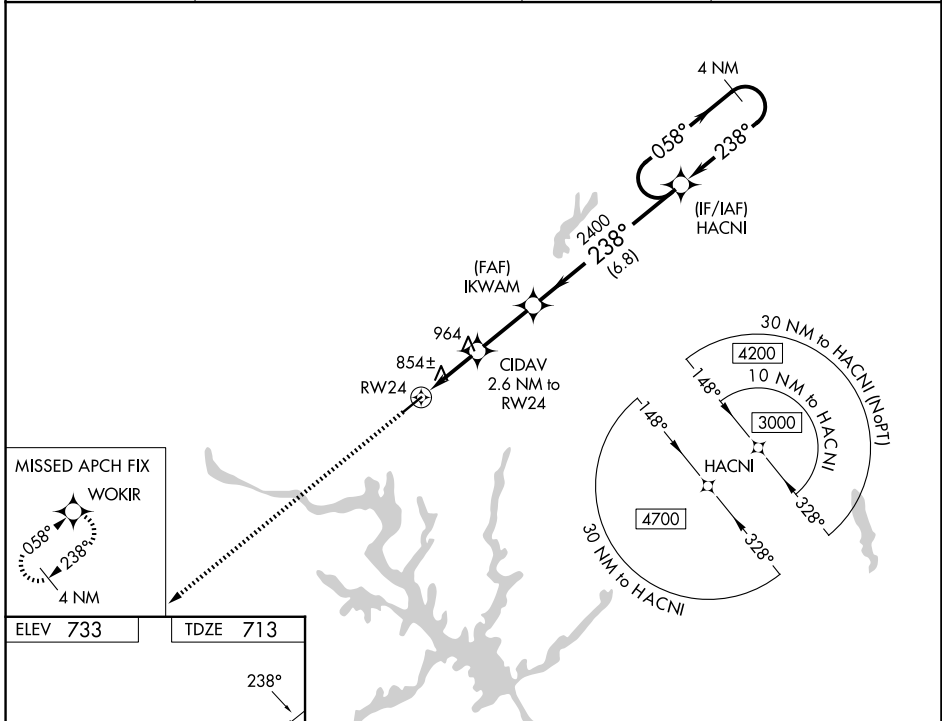
RNAV (GPS) RWY 24

DAVIDSON COUNTY EXEC (E.XX)

⚠ For uncompensated Baro-VNAV systems, LNAV/VNAV NA below -16°C (4°F) or above 54°C (130°F). When local altimeter setting not received, use Salisbury altimeter setting and increase all DA 37 feet and all MDA 40 feet, increase LPV and LNAV/VNAV all Cnts visibility 1/8 SM, LNAV Cat C visibility 1/4 SM. DME/DME RNP-0.3 NA. Helicopter visibility reduction below 3/4 SM NA. Baro-VNAV and VDP NA when using Salisbury altimeter setting.

MISSED APPROACH: Climb to 3000 direct WOKIR and hold.

AWOS-3 119.825	GREENSBORO APP CON 126.6 327.075	GCO 135.075	UNICOM 122.8 (CTAF) 0
--------------------------	--	-----------------------	---------------------------------



CATEGORY	A	B	C	D
LPV DA	1026-1	313 (300-1)		NA
LNAV/VNAV DA	1150-1½	437 (500-1½)		NA
LNAV MDA	1220-1	507 (500-1)	1220-1¾ 507 (500-1¾)	NA
CIRCLING	1220-1 487 (500-1)	1240-1 507 (600-1)	1340-1¾ 607 (700-1¾)	NA

MIRL Rwy 6-24 **0**
REIL Rws 24 **0**

SE-2, 16 APR 2026 to 14 MAY 2026

SE-2, 16 APR 2026 to 14 MAY 2026