

# ODKAE ONE DEPARTURE (OBSTACLE)

ALBUQUERQUE CENTER  
135.875 292.15  
CTAF  
122.8

### TAKEOFF MINIMUMS

Rwy 23: NA - Obstacle.

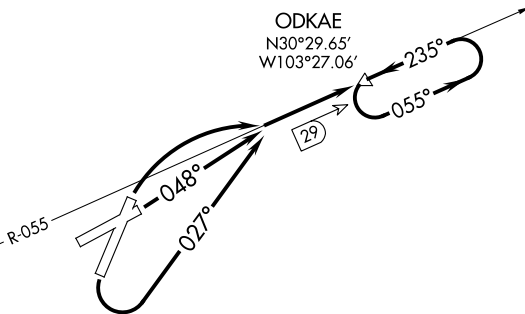
Rwys 1, 5: Standard.

Rwy 19: Standard with minimum climb of 432' per  
NM to 6800 or 1800-3 for VCOA.



R-6318

MARFA  
115.9 MRF   
Chan 106



NOTE: DME required.

(NOTES CONTINUED ON FOLLOWING PAGE)

NOTE: Chart not to scale.

## DEPARTURE ROUTE DESCRIPTION

TAKEOFF RUNWAY 1: Climbing right turn to intercept MRF VOR/DME R-055 to ODKAE/29 DME, thence...

TAKEOFF RUNWAY 5: Climb on heading 048° to intercept MRF VOR/DME R-055 to ODKAE/29 DME, thence...

TAKEOFF RUNWAY 19: Climbing left turn on heading 027° to intercept MRF VOR/DME R-055 to ODKAE/29 DME, thence...

...continue climb in ODKAE holding pattern to 8600 before proceeding on course.

VCOA RUNWAY 19: Obtain ATC approval for VCOA when requesting IFR clearance. Climb in visual conditions to cross Alpine-Casparis Muni airport at or above 6200 on heading 027° and on MRF VOR/DME R-055 to ODKAE/29 DME, do not exceed 210K until established on MRF R -055 to ODKAE. Continue climb in ODKAE holding pattern to 8600 before proceeding on course.