

WAAS CH 61143 W36A	APP CRS 007°	Rwy Idg TDZE 451 Apt Elev 451	4007
--	------------------------	---	-------------

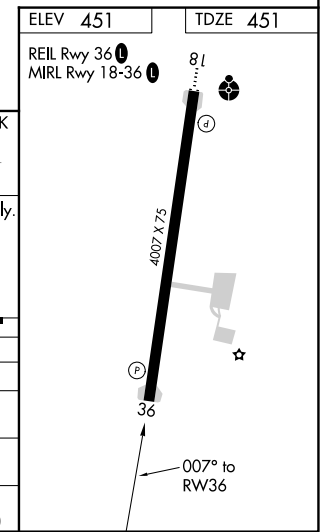
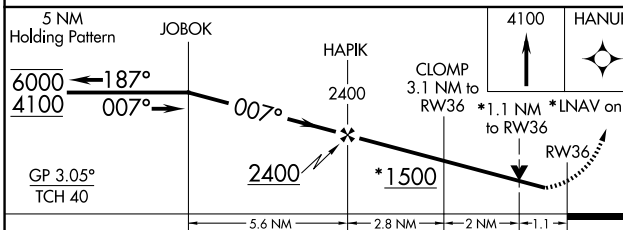
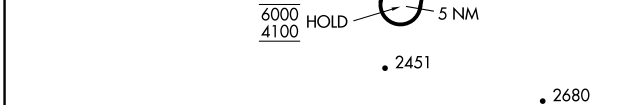
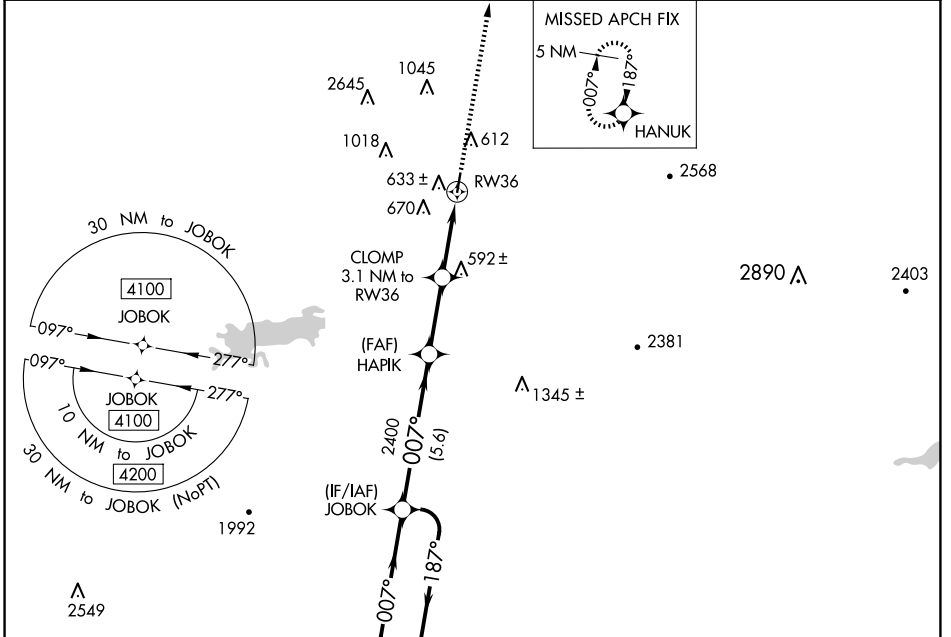
RNAV (GPS) RWY 36

ROBERT S KERR (RKR)

RNP APCH.
 ▼ Rwy 36 helicopter visibility reduction below 3/4 SM NA. For uncompensated Baro-VNAV systems, LNAV/VNAV NA below -1.5°C or above 54°C.
 ▲ Circling NA for Cats C and D West of Rwy 18-36.

MISSED APPROACH: Climb to 4100 direct HANUK and hold, continue to climb-in-hold to 4100.

AWOS-3 120.625	RAZORBACK APP CON * 120.9 343.75	UNICOM 122.8 (CTAF) 0
--------------------------	--	---------------------------------



CATEGORY	A	B	C	D
LPV DA	701-1	250 (300-1)		
LNAV/VNAV DA	786-1	335 (400-1)		
LNAV MDA	840-1	389 (400-1)	840-1 1/8	389 (400-1 1/8)
CIRCLING	1000-1	1100-1	1100-1 3/4	1160-2 1/4
	549 (600-1)	649 (700-1)	649 (700-1 3/4)	709 (800-1 1/4)

SC-1, 16 APR 2026 to 14 MAY 2026

SC-1, 16 APR 2026 to 14 MAY 2026