

# GARLAND SIX DEPARTURE

SC-2, 16 APR 2026 to 14 MAY 2026

LONE STAR DEP CON  
125.2 343.65  
CTAF  
122.8

**TOP ALTITUDE:  
ASSIGNED BY ATC**

**RADAR and DME required.**

**TAKEOFF MINIMUMS**  
Rwys 17, 35: Standard.

MAVERICK  
113.1 TTT  
Chan 78

MAVERICK  
113.1 TTT  
Chan 78

BONNHAM  
114.6 BYP  
Chan 93

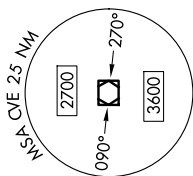
PARIS  
113.6 PRX  
Chan 83

TEXARKANA  
116.3 TKX  
Chan 110

COWBOY  
116.2 CVE  
Chan 109

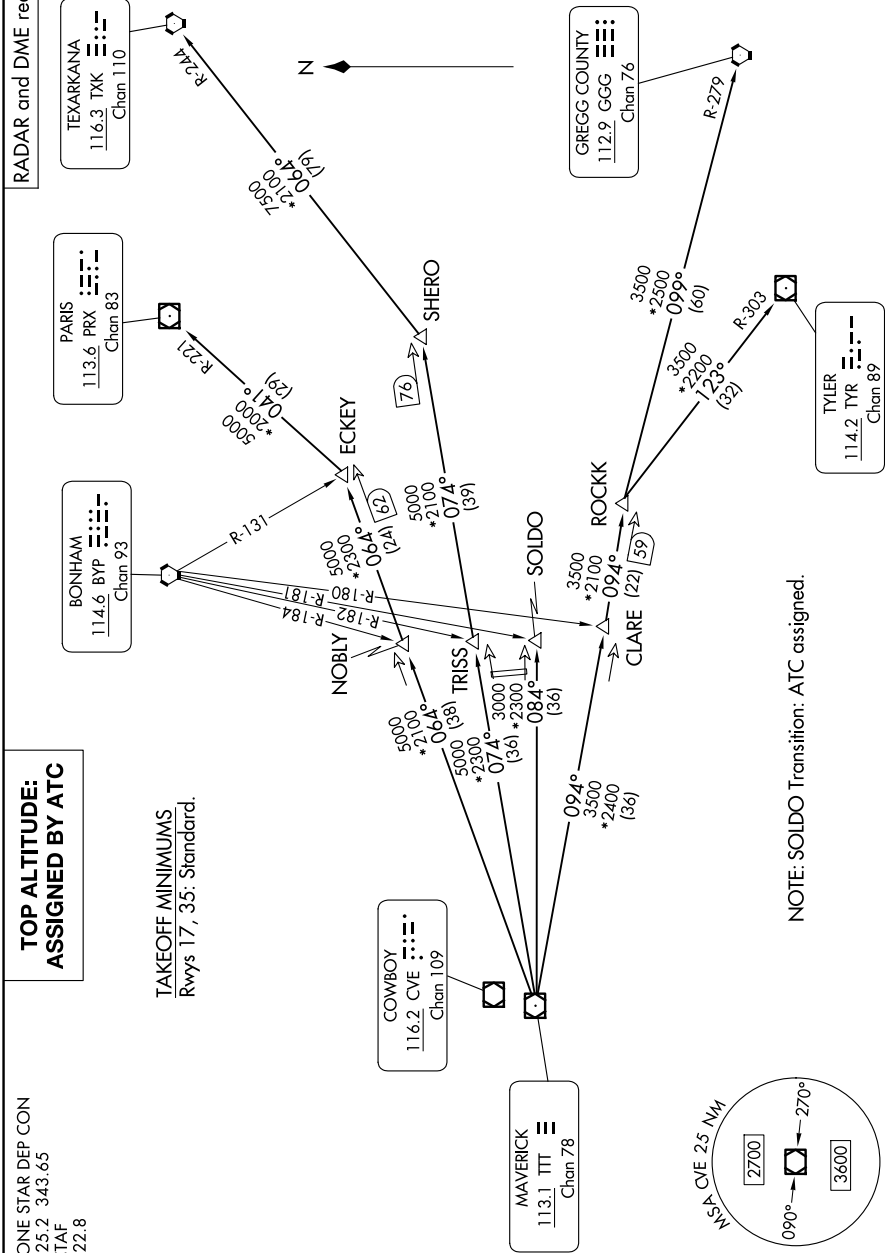
GREGG COUNTY  
112.9 GGG  
Chan 76

TYLER  
114.2 TYR  
Chan 89



NOTE: Chart not to scale.

NOTE: SOLDLO Transition: ATC assigned.



(CONTINUED ON FOLLOWING PAGE)

SC-2, 16 APR 2026 to 14 MAY 2026