

APP CRS <b>347°</b>	Rwy Idg <b>3084</b>
	TDZE <b>574</b>
	Apt Elev <b>574</b>

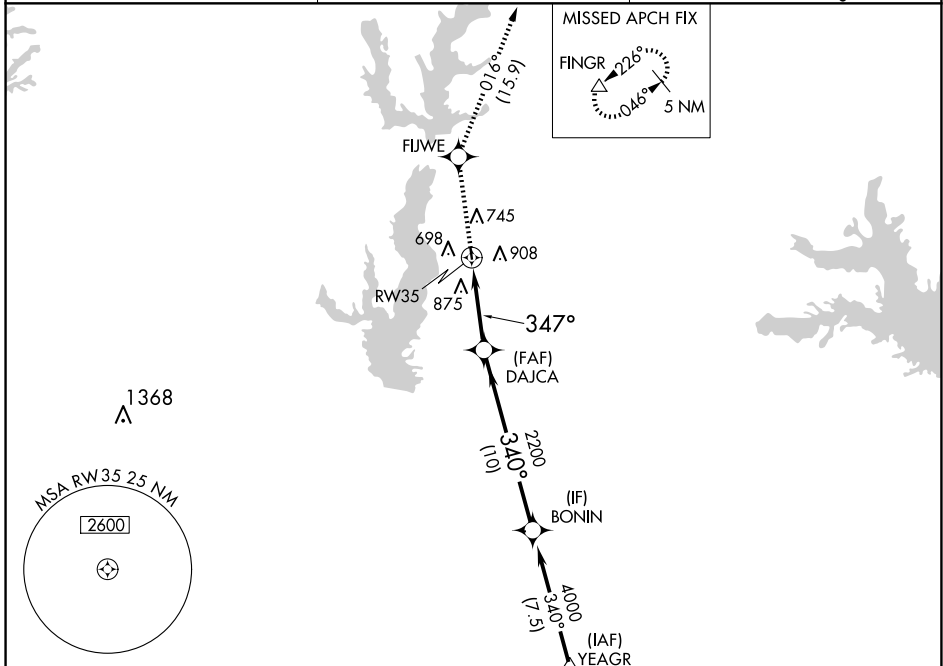
# RNAV (GPS) RWY 35

RALPH M HALL/ROCKWALL MUNI (F46)

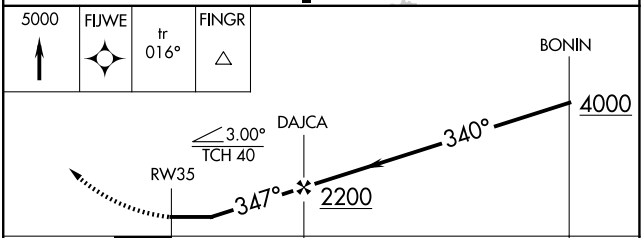
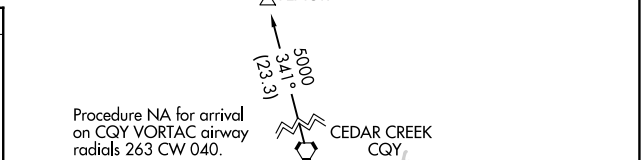
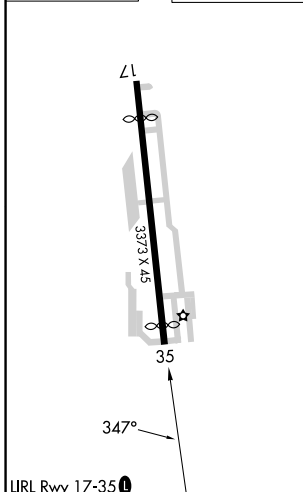
**▼** DME/DME RNP-0.3 NA. When local altimeter setting not received, use Dallas Love Fld altimeter setting and increase all MDA 80 feet.  
**▲** Helicopter visibility reduction below 1 SM NA. Procedure NA at night.

MISSED APPROACH: Climb to 5000 direct FIJWE and on track 016° to FINGR and hold.

AWOS-3PT <b>121.25</b>	LONE STAR APP CON <b>124.3 282.275</b>	UNICOM <b>122.8 (CTAF) ①</b>
---------------------------	---	---------------------------------



ELEV 574	TDZE 574
----------	----------



CATEGORY	A	B	C	D
LNAV MDA	1200-1	626 (700-1)	NA	
CIRCLING	1280-1	706 (800-1)	NA	

SC-2, 16 APR 2026 to 14 MAY 2026

SC-2, 16 APR 2026 to 14 MAY 2026