

# COPTER NDB 303°

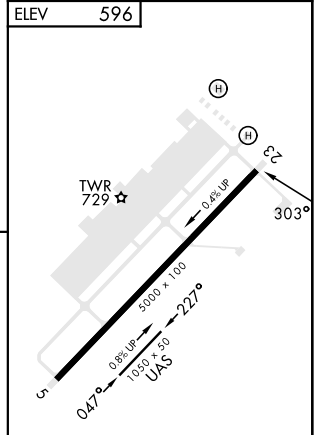
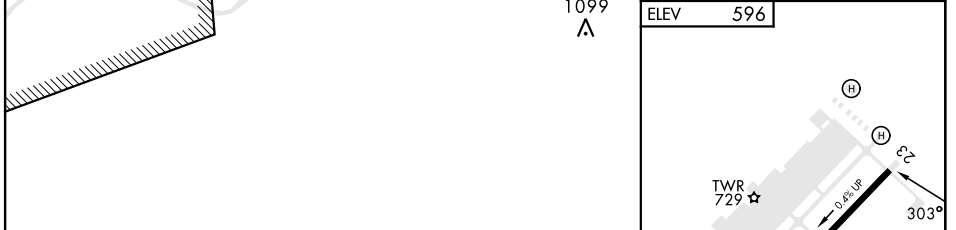
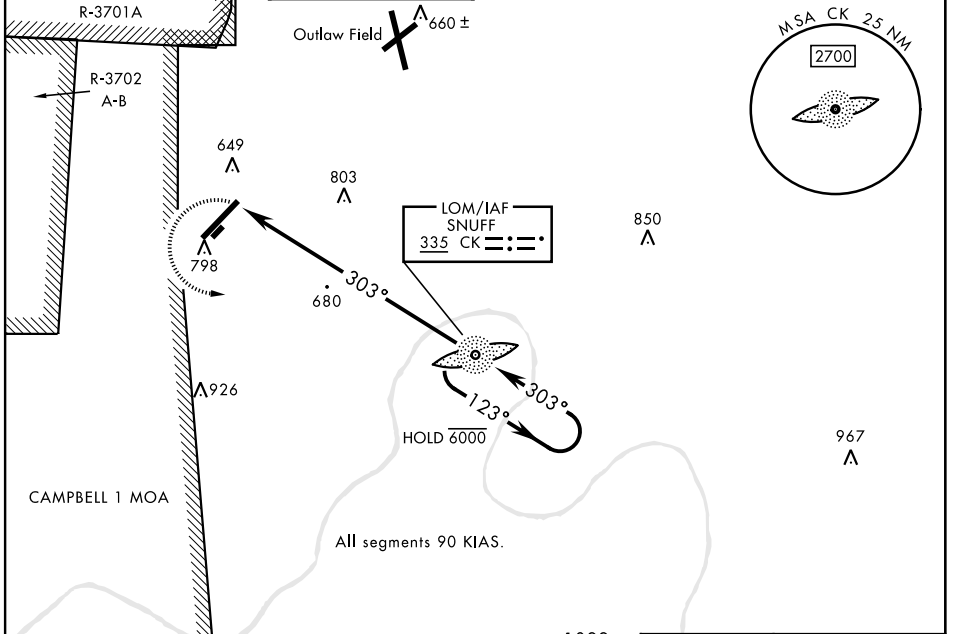
LOM CK <b>335</b>	APCH CRS <b>303°</b>	Rwy Idg TDZE Arprt Elev <b>N/A</b> <b>N/A</b> <b>596</b>	[USA]	SABRE AAF (FORT CAMPBELL) (KEOD)
----------------------	-------------------------	---	-------	----------------------------------

RADAR required (for procedure entry)

When local altimeter setting not received, use Fort Campbell, KY altimeter setting.

MISSED APPROACH: Climbing left turn to 2200 direct CK LOM and hold.

ATIS <b>306.5</b>	CAMPBELL APP CON <b>134.35 307.025</b>	TOWER ★ <b>124.675 (CTAF) 290.45</b>	GND CON <b>142.975 267.3</b>	CLNC DEL <b>237.6</b>	EAGLE RADIO <b>139.9 285.7</b>	ASR
----------------------	---	---	---------------------------------	--------------------------	-----------------------------------	-----



CATEGORY	COPTER				
H-303°	1080-½	485	(500-½)		

FAF to MAP 5.1 NM					
Knots	45	60	75	90	105
Min:Sec	6:48	5:06	4:05	3:24	2:55

# COPTER NDB 303°

SE-1, 16 APR 2026 to 14 MAY 2026

SE-1, 16 APR 2026 to 14 MAY 2026