

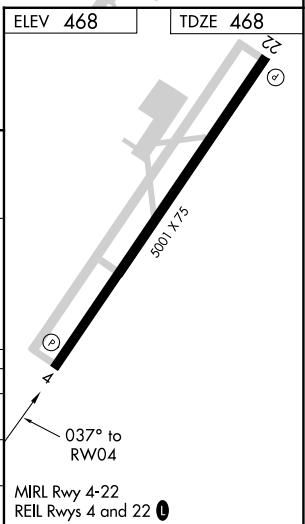
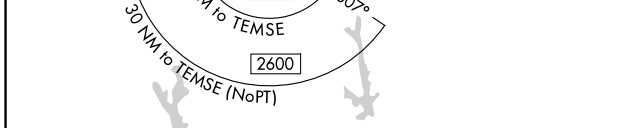
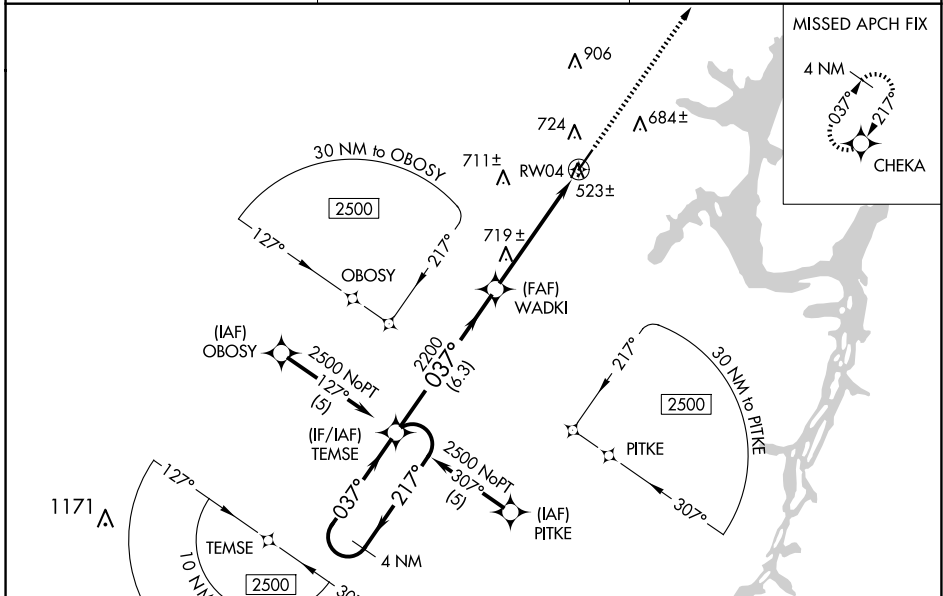
WAAS CH 77814 W04A	APP CRS 037°	Rwy Idg TDZE 468 Apt Elev 468	5001
--	------------------------	---	-------------

RNAV (GPS) RWY 4

BENTON COUNTY (ØM4)

RNP APCH.	<p>Baro-VNAV NA. Use Beech River Rgnl altimeter setting; when not received use Jackson altimeter setting and increase all DA 58 feet and all MDA 60 feet and increase LPV all Cats visibility ¼ mile, LNAV/VNAV all Cats visibility ¼ mile, and LNAV Cat C visibility ¼ mile.</p>	MISSED APPROACH: Climb to 2500 direct CHEKA and hold.
-----------	---	---

PVE AWOS-3 118.125	MEMPHIS CENTER 125.85 379.25	UNICOM 122.8 (CTAF) Ø
------------------------------	--	---------------------------------



4 NM Holding Pattern	VGSI and RNAV glidepath not coincident (VGSI 3.50/TCH 17).	2500	CHEKA
2500	← 217°	037° →	037°
GP 3.00°	TCH 40	WADKI	RWY 4
		6.3 NM	5.2 NM

CATEGORY	A	B	C	D
LPV DA	771-1	303 (400-1)		NA
LNAV/VNAV DA	944-1¾	476 (500-1¾)		NA
LNAV MDA	1040-1	572 (600-1)	1040-1½ 572 (600-1½)	NA

SE-1, 16 APR 2026 to 14 MAY 2026

SE-1, 16 APR 2026 to 14 MAY 2026