

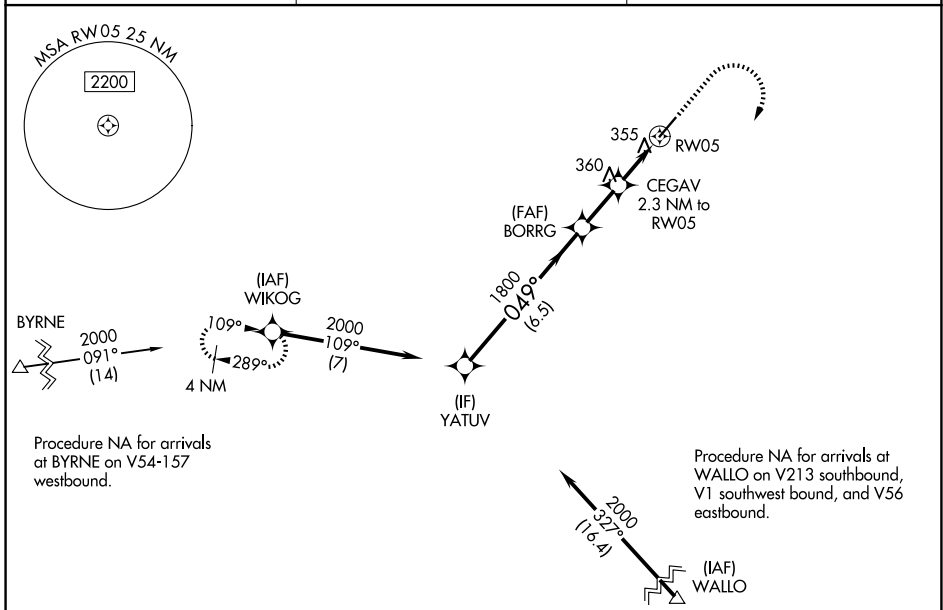
WAAS CH 69431 W05A	APP CRS 049°	Rwy Ldg TDZE 166 Apt Elev 166	5254
--	------------------------	---	-------------

RNAV (GPS) RWY 5

MOUNT OLIVE MUNI (W40)

RNP APCH - GPS.		MISSED APPROACH: Climb to 900 then climbing right turn to 2000 direct WIKOG and hold.
<p>▼ ▲</p> Rwy 5 helicopter visibility reduction below 3/4 SM NA. When local altimeter setting not received, use Goldsboro altimeter setting.		

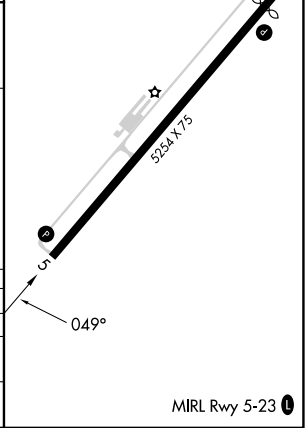
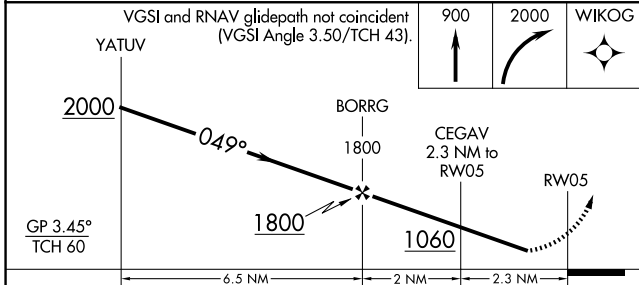
AWOS-3P 120.075	SEYMOUR JOHNSON APP CON* 119.7 273.6	UNICOM 122.8 (CTAF) 0
---------------------------	--	---------------------------------



SE-2, 16 APR 2026 to 14 MAY 2026

SE-2, 16 APR 2026 to 14 MAY 2026

ELEV 166	TDZE 166
----------	----------



CATEGORY	A	B	C	D
LPV DA	625-1 ³ / ₈	459 (500-1 ³ / ₈)		NA
LNVA MDA	640-1	474 (500-1)	640-1 ³ / ₈ 474 (500-1 ³ / ₈)	NA
CIRCLING	700-1	534 (600-1)	720-1 ¹ / ₂ 554 (600-1 ¹ / ₂)	NA