

BORRN SIX DEPARTURE (RNAV)

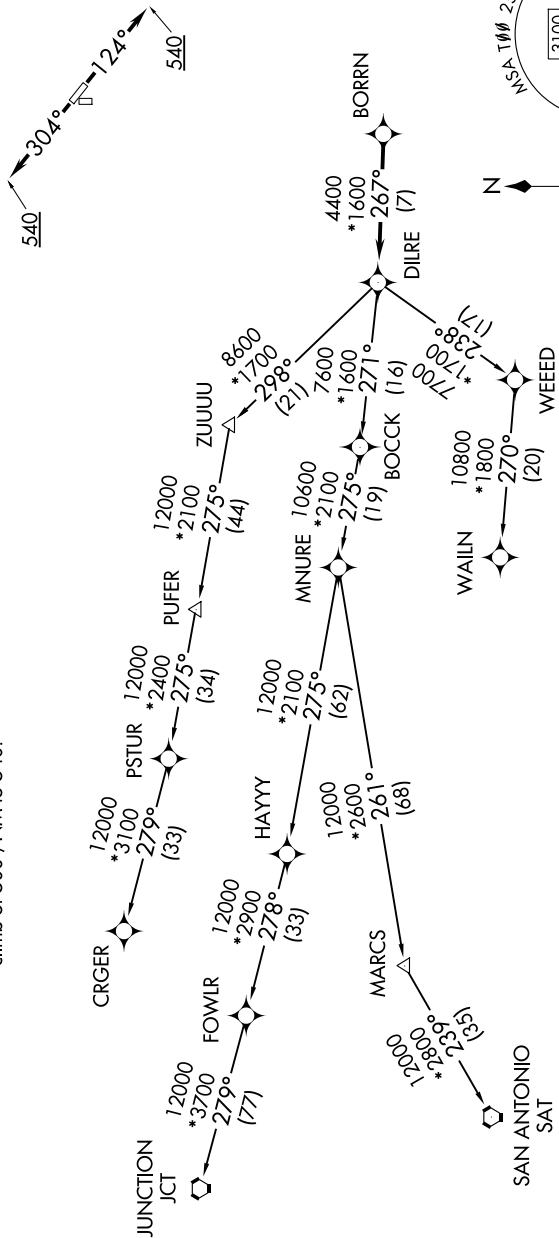
CTAF
122.9
HOUSTON DEP CON
134.45 284.0

TAKEOFF MINIMUMS

Rwys 17, 35: NA - Environmental.
Rwys 12, 30: Standard with minimum
climb of 500'/NM to 540.

RNAV 1 - DME/DME/IRU or GPS.
RADAR required.

TOP ALTITUDE:
ASSIGNED BY ATC



(CONTINUED ON FOLLOWING PAGE)

BORRN SIX DEPARTURE (RNAV)