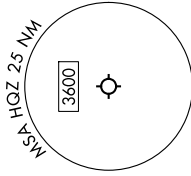


**BOTCH ONE DEPARTURE (RNAV)**

MESQUITE, TEXAS

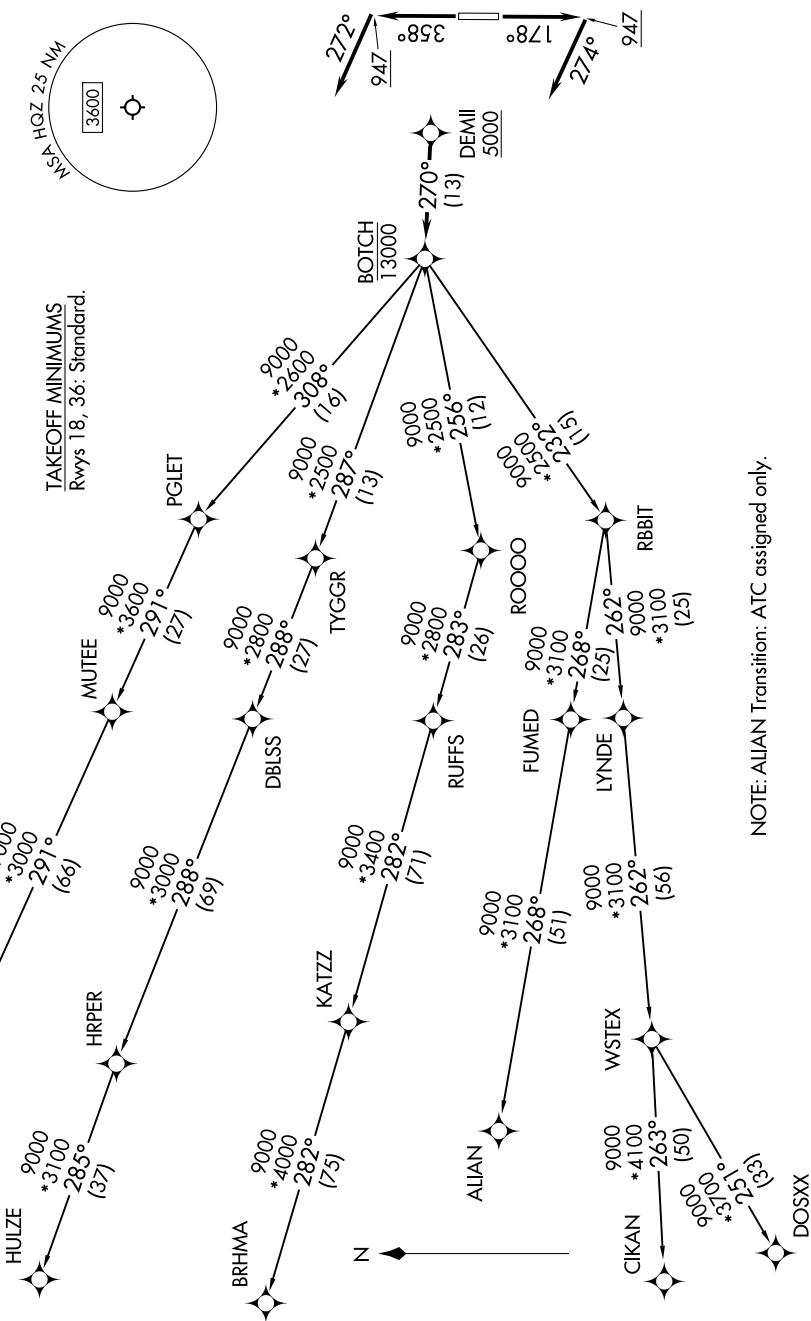
LONE STAR DEP CON  
125.2 343.65  
MESQUITE TOWER\*  
120.3 (CTAF)



RNAV 1 - DME/DME/IRU or GPS required.  
RADAR required for non-GPS equipped aircraft.

TAKEOFF MINIMUMS  
Rwys 18, 36: Standard.

TOP ALTITUDE:  
ASSIGNED BY ATC



NOTE: Chart not to scale.

NOTE: AIAN Transition: ATC assigned only.

(CONTINUED ON FOLLOWING PAGE)

**BOTCH ONE DEPARTURE (RNAV)**

MESQUITE, TEXAS

MESQUITE METRO (HQZ)