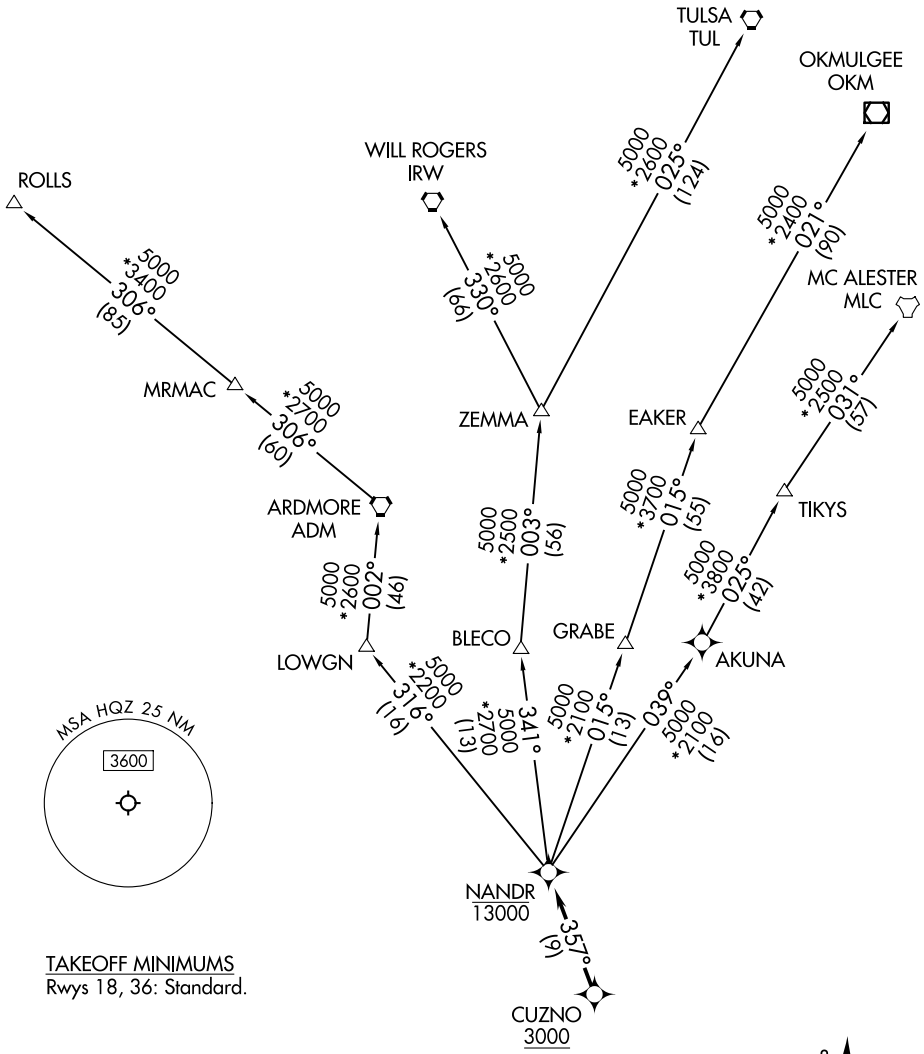


# NANDR THREE DEPARTURE (RNAV)

LONE STAR DEP CON  
125.2 343.65 (Rwy 18)  
124.3 282.275 (Rwy 36)

RNAV 1 - DME/DME/IRU or GPS.  
RADAR required.

**TOP ALTITUDE:  
ASSIGNED BY ATC**



**TAKEOFF MINIMUMS**  
Rwys 18, 36: Standard.

NOTE: EAKER Transition: For TUL terminal arrivals only.  
NOTE: TULSA Transition: For all aircraft overflying TUL VORTAC.  
NOTE: Aircraft arriving to the Oklahoma City terminal area, file and expect the ZEMMA enroute transition.



NOTE: Chart not to scale.

(CONTINUED ON FOLLOWING PAGE)

# NANDR THREE DEPARTURE (RNAV)

SC-2, 16 APR 2026 to 14 MAY 2026

SC-2, 16 APR 2026 to 14 MAY 2026