

(DAWNN1.DAWNN) 23334
DAWNN ONE DEPARTURE

AL-6452 (FAA)

INDIANAPOLIS RGNL (MQJ)
 INDIANAPOLIS, INDIANA

**TOP ALTITUDE:
 ASSIGNED BY ATC**

AWOS-3PT
 124.175
 CLNC DEL
 119.25
 INDIANAPOLIS DEP CON
 127.15 317.8

BRICKYARD
 116.3 VHP
 Chan 110

TERRE HAUTE
 115.3 TTH
 Chan 100

HOOSIER
 110.2 OOM
 Chan 39

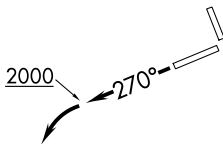
SNEVA
 RADAR

FOYTT
 RADAR

DAWNN
 10000
 (For LOUISVILLE Transition)

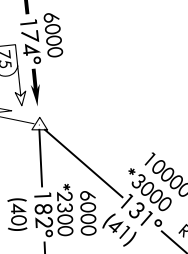
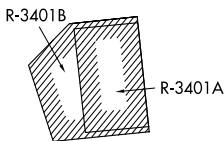
LOUISVILLE
 114.8 IU
 Chan 95

MYSTIC
 108.2 MYS



TAKEOFF MINIMUMS:

Rwys 7, 16, 25: Standard.
 Rwy 34: 300-1 or standard with minimum climb
 of 347' per NM to 1100.



- NOTE: RADAR required.
- NOTE: Select appropriate localizer/DME frequency/channel prior to departure.
- NOTE: Turbojets accelerate to 250K until reaching 10000, if unable advise ATC.
- NOTE: Assigned to aircraft with a requested altitude of 11000 or above.

(NARRATIVE ON FOLLOWING PAGE)

NOTE: Chart not to scale.

EC-2, 16 APR 2026 to 14 MAY 2026

EC-2, 16 APR 2026 to 14 MAY 2026