

(MEARZ7.MEARZ) 23334

MEARZ SEVEN DEPARTURE AL-6452 (FAA)

INDIANAPOLIS RGNL (MQJ)
INDIANAPOLIS, INDIANA

**TOP ALTITUDE:
ASSIGNED BY ATC**

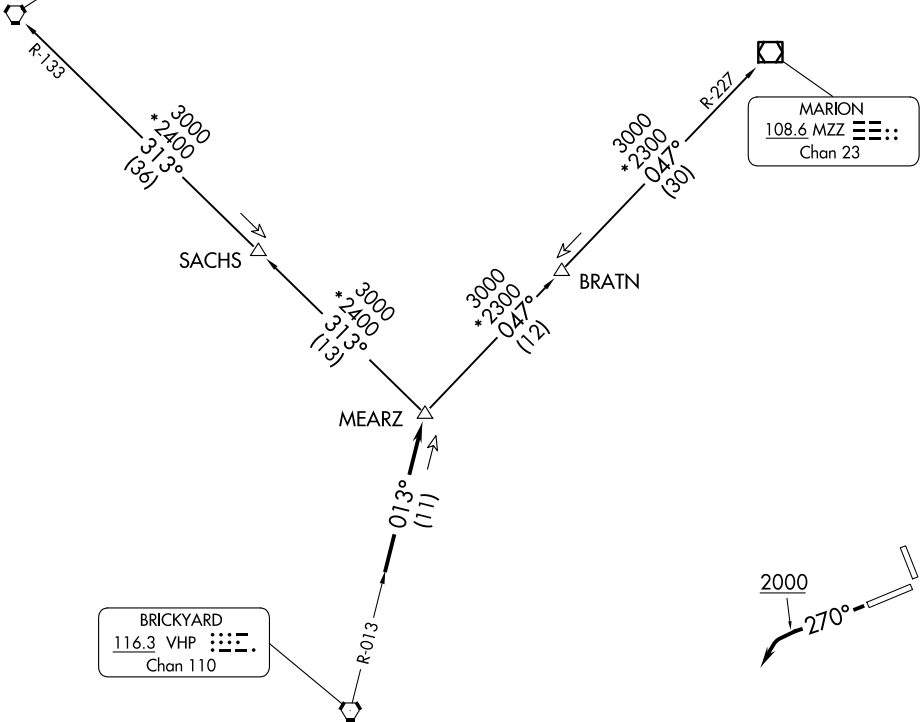
RADAR required.

AWOS-3PT
124.175
CLNC DEL
119.25
INDIANAPOLIS DEP CON
127.15 317.8

BOILER
115.1 BVT
Chan 98

MARION
108.6 MZZ
Chan 23

BRICKYARD
116.3 VHP
Chan 110



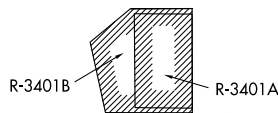
TAKEOFF MINIMUMS

Rwy 7, 16, 25: Standard.

Rwy 34: 300-1 or standard with minimum climb of 347' per NM to 1100.

- NOTE: Turbojets accelerate to 250K until reaching 10000, if unable advise ATC.
- NOTE: Assigned to aircraft with a requested altitude of 11000 or above.
- NOTE: Select appropriate localizer/DME frequency/channel prior to departure.

(NARRATIVE ON FOLLOWING PAGE)



NOTE: Chart not to scale.

EC-2, 16 APR 2026 to 14 MAY 2026

EC-2, 16 APR 2026 to 14 MAY 2026

MEARZ SEVEN DEPARTURE
(MEARZ7.MEARZ) 19MAY22

INDIANAPOLIS, INDIANA
INDIANAPOLIS RGNL (MQJ)