

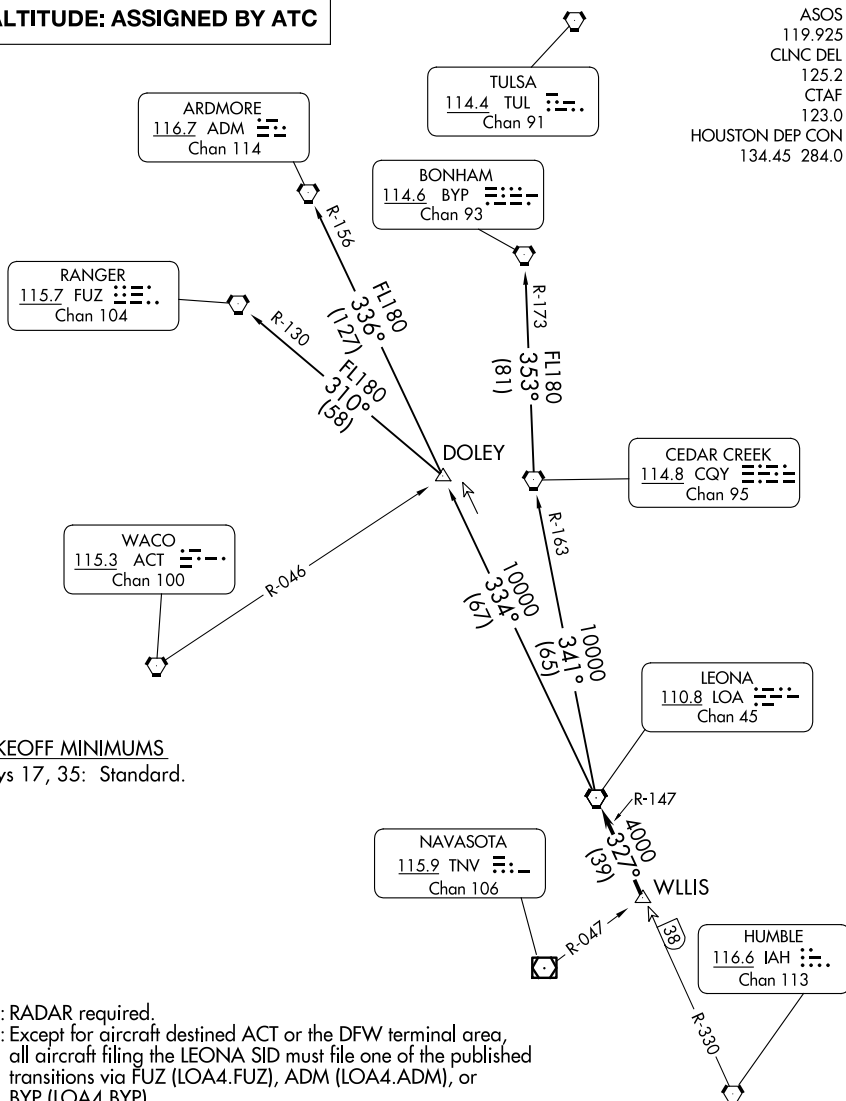
LEONA FOUR DEPARTURE

AL-6453 (FAA)

TEXAS GULF COAST RGNL (LBX)
ANGLETON/LAKE JACKSON, TEXAS

TOP ALTITUDE: ASSIGNED BY ATC

ASOS	119.925
CLNC DEL	125.2
CTAF	123.0
HOUSTON DEP CON	134.45 284.0



TAKEOFF MINIMUMS

Rwys 17, 35: Standard.

NOTE: RADAR required.

NOTE: Except for aircraft destined ACT or the DFW terminal area, all aircraft filing the LEONA SID must file one of the published transitions via FUZ (LOA4.FUZ), ADM (LOA4.ADM), or BYP (LOA4.BYP).

NOTE: RANGER TRANSITION: For aircraft overflying west/northwest of the DFW terminal area FL240 and above.

NOTE: ARDMORE TRANSITION: For aircraft overflying north/northwest of the DFW terminal area FL240 and above.

NOTE: BONHAM TRANSITION: For aircraft overflying/landing TUL VORTAC FL240 and above.

NOTE: Chart not to scale.

(CONTINUED ON FOLLOWING PAGE)