

WAAS CH <b>50500</b> <b>W25A</b>	APP CRS <b>246°</b>	Rwy Ldg TDZE <b>10</b> Apt Elev <b>11</b>	<b>4463</b>
--	------------------------	---	-------------

# RNAV (GPS) RWY 25

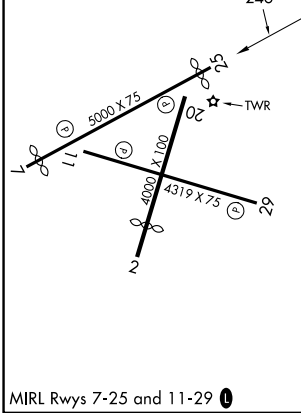
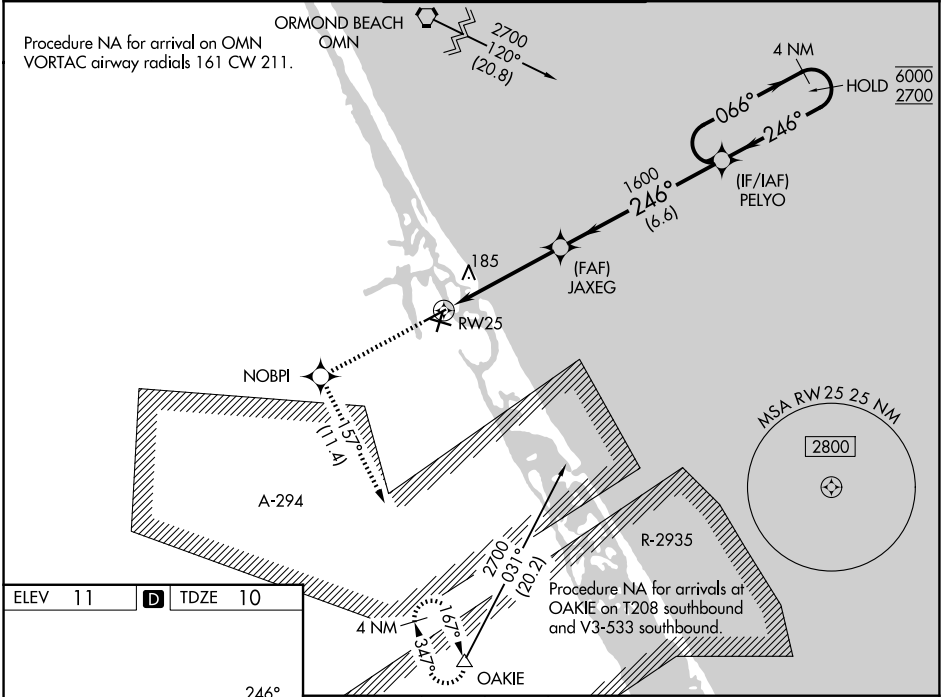
NEW SMYRNA BEACH MUNI (JACK BOLT FLD) (EVB)

RNP APCH-GPS.

**▼** Rwy 25 helicopter visibility reduction below 1 SM NA. Straight-in Rwy 25 NA at night, Circling Rwy 7, 11, 25 NA at night. When local altimeter setting not received, use Daytona Beach altimeter setting increase LPV DA to 328 feet and all MDA 40 feet. Increase LNAV Cat C visibility 1/8 SM and Circling Cat C visibility 1/4 SM.

MISSED APPROACH: Climb to 4000 direct NOBPI and on track 157° to OAKIE and hold, continue climb-in-hold to 4000.

ATIS <b>124.625</b>	DAYTONA APP CON <b>125.35 322.3</b>	NEW SMYRNA BEACH TOWER* <b>119.675 (CTAF) 0</b>	GND CON <b>121.325</b>	UNICOM <b>122.95</b>
------------------------	--	--	---------------------------	-------------------------



ELEV 11	<b>D</b>	TDZE 10	NOBPI	tr 157°	OAKIE	VGSI and RNAV glidepath not coincident (VGSI Angle 3.00/TCH 46).	4 NM Holding Pattern

CATEGORY	A	B	C	D
LPV DA	303-1 293 (300-1)			NA
LNAV MDA	440-1	430 (500-1)	440-1 1/4 430 (500-1 1/4)	NA
CIRCLING	440-1 429 (500-1)	520-1 509 (600-1)	680-1 3/4 669 (700-1 3/4)	NA

SE-3, 16 APR 2026 to 14 MAY 2026

SE-3, 16 APR 2026 to 14 MAY 2026