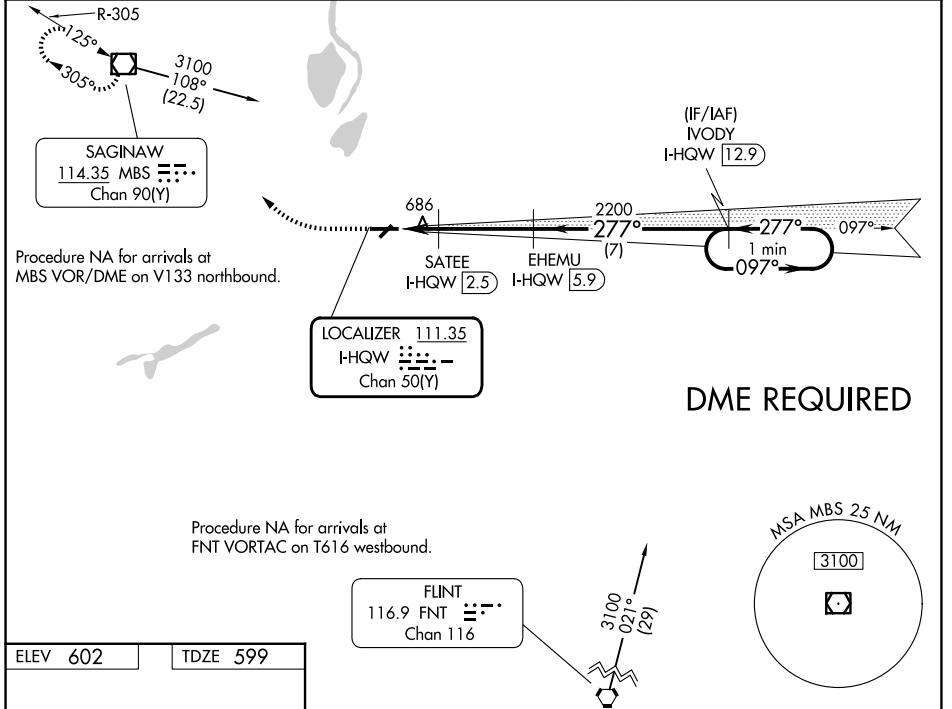


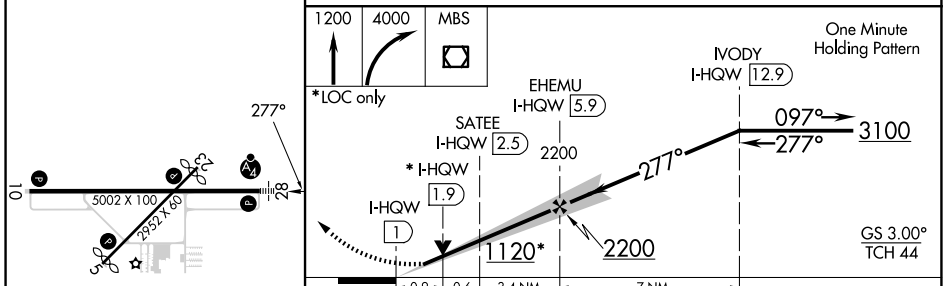
LOC/DME I-HQW 111.35 Chan 50 (Y)	APP CRS 277°	Rwy Ldg TDZE Apt Elev	5002 599 602
---	------------------------	-----------------------------	---

ILS or LOC RWY 28
SAGINAW COUNTY/H W BROWNE (HYX)

NA Inoperative table does not apply to S-ILS 28. DME required. Circling Rwy 5, 23 NA at night. Circling NA for Cat C north of Rwy 10-28.	MALSF 	MISSED APPROACH: Climb to 1200 then climbing right turn to 4000 direct MBS VOR/DME and hold, continue climb-in-hold to 4000.
AWOS-3P 118.325	GREAT LAKES APP CON * 120.95 235.625	UNICOM 122.8 (CTAF) 0



ELEV 602	TDZE 599
----------	----------



CATEGORY	A	B	C	D
S-ILS 28		802- ³ / ₄ 203 (200- ³ / ₄)		NA
S-LOC 28		940- ³ / ₄ 341 (400- ³ / ₄)		NA
CIRCLING	1100-1	498 (500-1)	1460-2 ¹ / ₂ 858 (900-2 ¹ / ₂)	NA

EC-1, 16 APR 2026 to 14 MAY 2026

EC-1, 16 APR 2026 to 14 MAY 2026