

SAGINAW, MICHIGAN

AL-6474 (FAA)

26078

VOR/DME MBS <b>114.35</b> Chan <b>90</b> (Y)	APP CRS <b>125°</b>	Rwy Ldg TDZE Apt Elev <b>602</b>	<b>N/A</b> <b>N/A</b>
--	------------------------	--	--------------------------

# VOR/DME-A

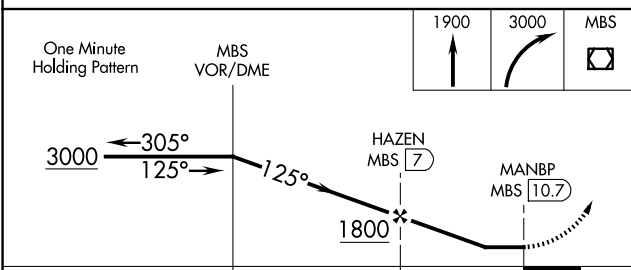
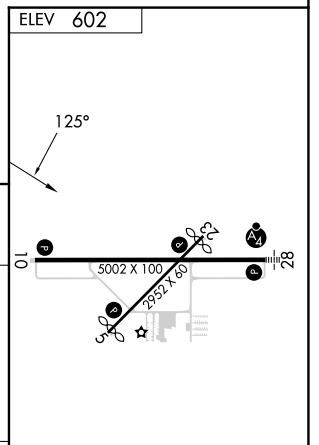
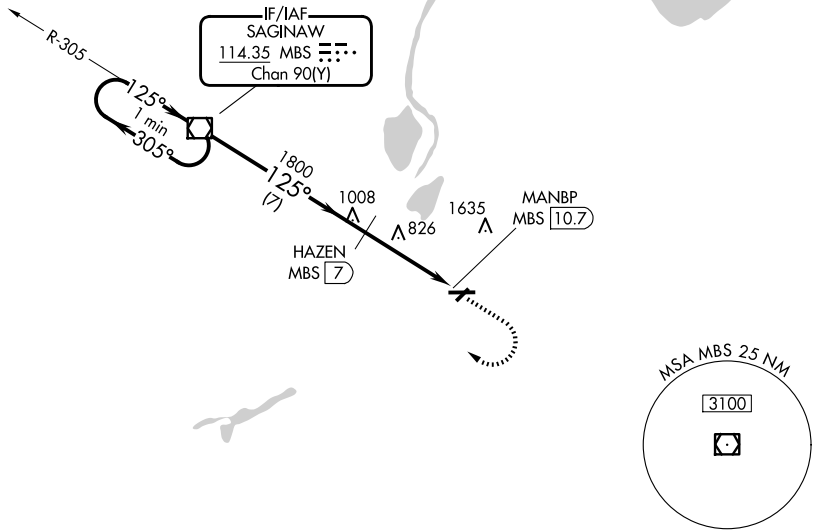
SAGINAW COUNTY/H W BROWNE (HYX)

**⚠** Circling to Rwy 5/23 NA at night. When local altimeter setting not received, use Saginaw MBS Intl altimeter setting and increase all MDA 40 feet and increase Circling Cat C visibility ¼ SM. Circling NA for Cat C north of Rwy 10-28.

**⚠** MISSED APPROACH: Climb to 1900 then climbing right turn to 3000 direct MBS VOR/DME and hold.

AWOS-3P <b>118,325</b>	GREAT LAKES APP CON ★ <b>120,95 235,625</b>	UNICOM <b>122.8</b> (CTAF) <b>0</b>
---------------------------	--	--

NoPT for arrival on MBS VOR/DME  
airway radials 212 CW 016.



CATEGORY	A	B	C	D	REIL Rwy 10 <b>0</b> HIRL Rwy 10-28 <b>0</b> MIRL Rwy 5-23 <b>0</b>
CIRCLING	1160-1	558 (600-1)	1460-2½ 858 (900-2½)	NA	

SAGINAW, MICHIGAN

SAGINAW COUNTY/H W BROWNE (HYX)

Amtd 4A 18JUN20

43°26'N - 83°52'W

# VOR/DME-A

EC-1, 16 APR 2026 to 14 MAY 2026

EC-1, 16 APR 2026 to 14 MAY 2026