

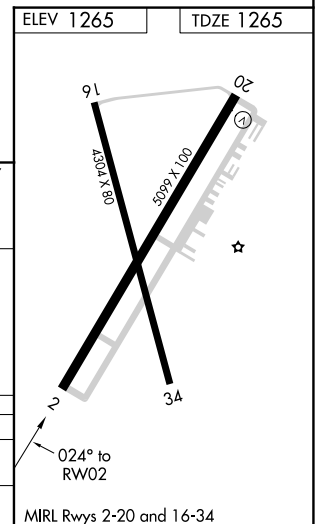
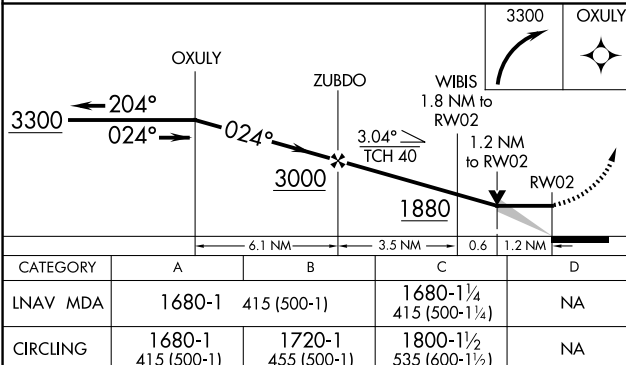
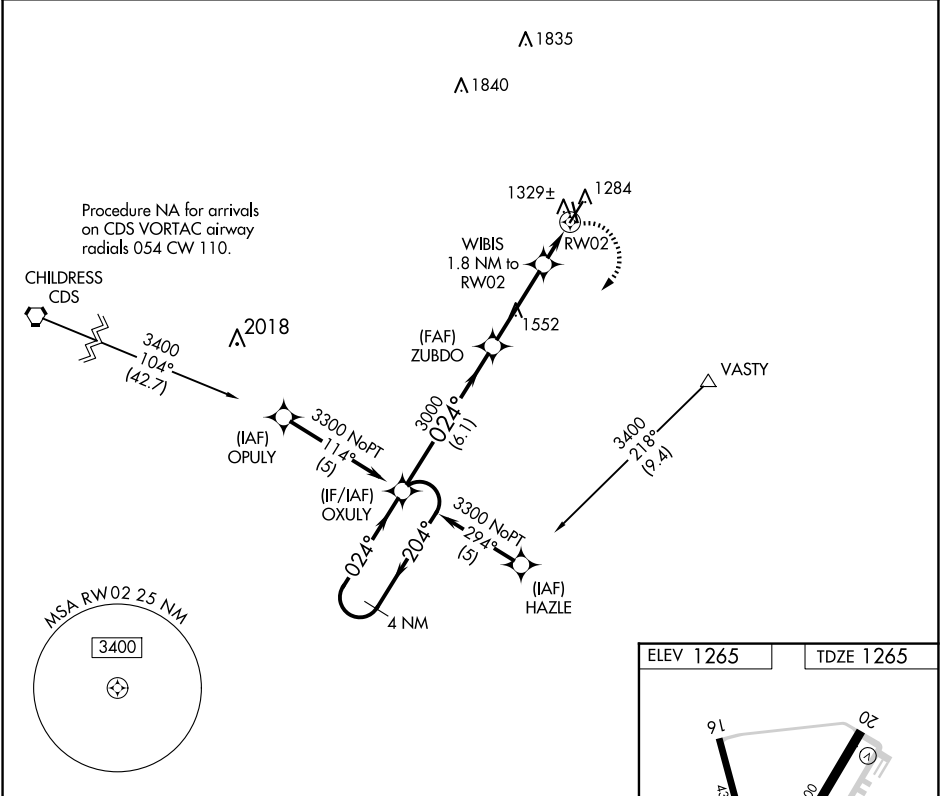
APP CRS	Rwy Idg	<b>5099</b>
<b>024°</b>	TDZE	<b>1265</b>
	Apt Elev	<b>1265</b>

# RNAV (GPS) RWY 2

WILBARGER COUNTY (F05)

RNP APCH.	<p>When local altimeter setting not received, use Frederick altimeter setting: increase all MDA 40 feet. VDP NA when using Frederick altimeter setting.</p>	MISSED APPROACH: Climbing right turn to 3300 direct OXULY and hold.
-----------	---	---

AWOS-3 <b>118.525</b>	ALTUS APP CON* <b>125.1 353.7</b>	UNICOM <b>122.8 (CTAF) 0</b>
--------------------------	--------------------------------------	---------------------------------



CATEGORY	A	B	C	D
RNAV MDA	1680-1	415 (500-1)	1680-1¼ 415 (500-1¼)	NA
CIRCLING	1680-1 415 (500-1)	1720-1 455 (500-1)	1800-1½ 535 (600-1½)	NA

SC-2, 16 APR 2026 to 14 MAY 2026

SC-2, 16 APR 2026 to 14 MAY 2026