

NDB DVK	APP CRS	Rwy Ldg TDZE	N/A
311	211°	Apt Elev	1022

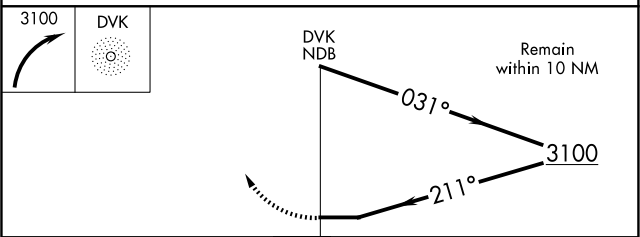
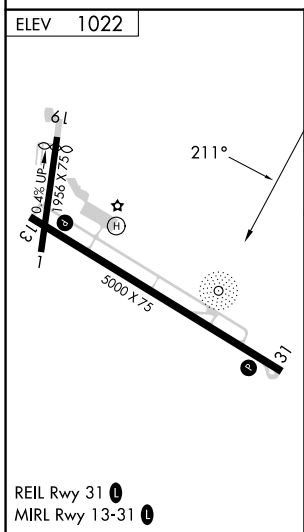
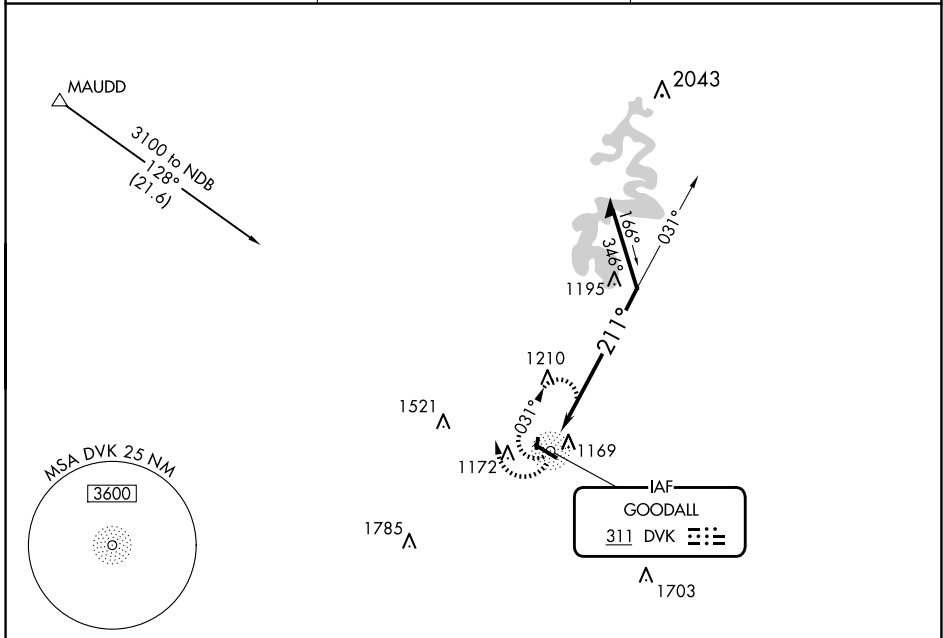
NDB-A

STUART POWELL FLD (DVK)

NA When local altimeter setting not received, use Lexington altimeter setting and increase all MDAs 80 feet and visibility Cats C and D ¼ mile. Rwy 1, 19 helicopter visibility reduction below 1 SM NA. Circling Rwy 1, 19 NA at night.

MISSED APPROACH: Climbing right turn to 3100 in DVK NDB holding pattern.

AWOS-3 128.325	LEXINGTON APP CON 120.15 259.3	UNICOM 122.8 (CTAF)
--------------------------	--	-------------------------------



CATEGORY	A	B	C	D
CIRCLING	1600-1 578 (600-1)	1700-1 678 (700-1)	1720-2 698 (700-2)	1840-2 ¾ 818 (900-2 ¾)

SE-1, 16 APR 2026 to 14 MAY 2026

SE-1, 16 APR 2026 to 14 MAY 2026