

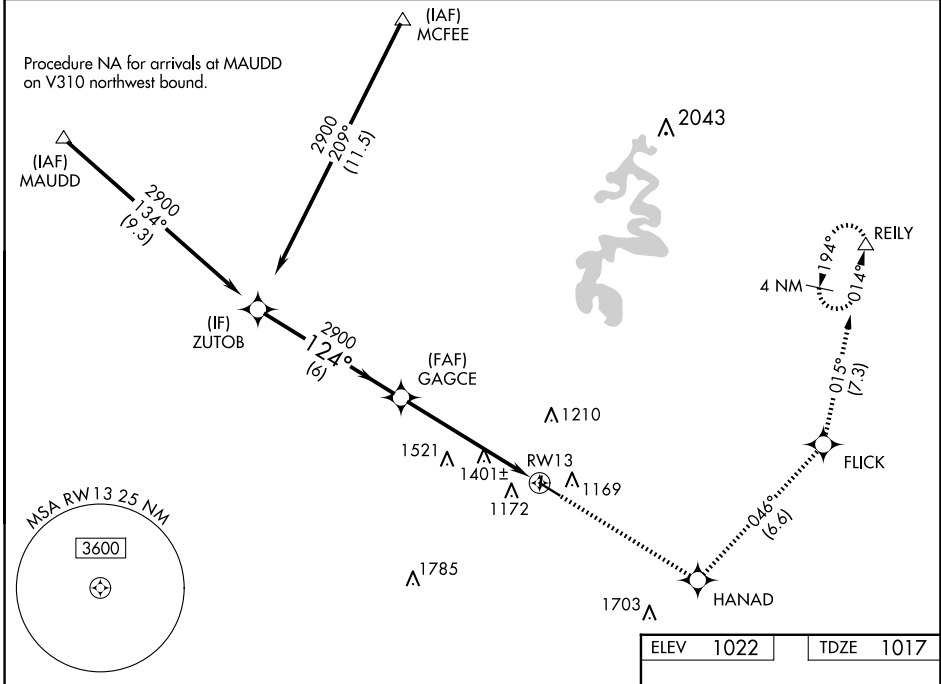
WAAS CH 93706 W13A	APP CRS 124°	Rwy Ldg TDZE 1017 Apt Elev 1022	5000
--	------------------------	---	-------------

RNAV (GPS) RWY 13

STUART POWELL FLD (DVK)

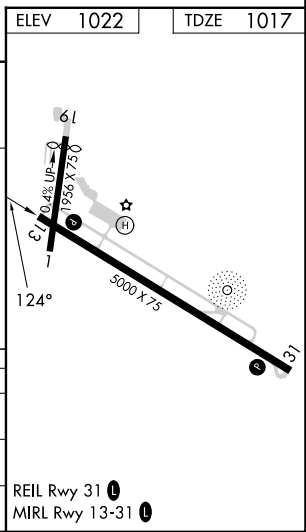
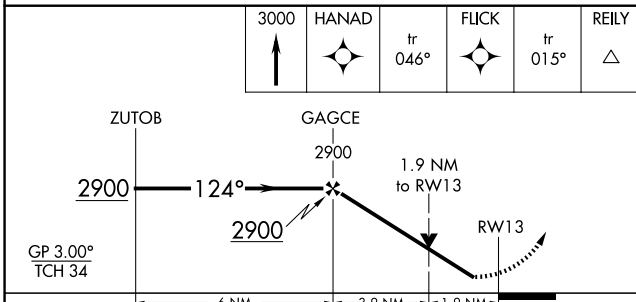
RNP APCH - GPS.	MISSED APPROACH: Climb to 3000 direct HANAD and on track 046° to FLICK and on track 015° to RELY and hold.
<p>▼ Rwy 13 helicopter visibility reduction below 3/4 SM NA.</p> <p>▲ For uncompensated Baro-VNAV systems, LNAV/VNAV NA below -17°C or above 54°C.</p>	

AWOS-3 128.325	LEXINGTON APP CON 120.15 259.3	UNICOM 122.8 (CTAF) 0
--------------------------	--	---------------------------------



SE-1, 16 APR 2026 to 14 MAY 2026

SE-1, 16 APR 2026 to 14 MAY 2026



CATEGORY	A	B	C	D
LPV DA	1267-1		250 (300-1)	
LNAV/VNAV DA	1660-1 3/4		643 (700-1 3/4)	
LNAV MDA	1660-1 643 (700-1)		1660-1 3/4 643 (700-1 3/4)	