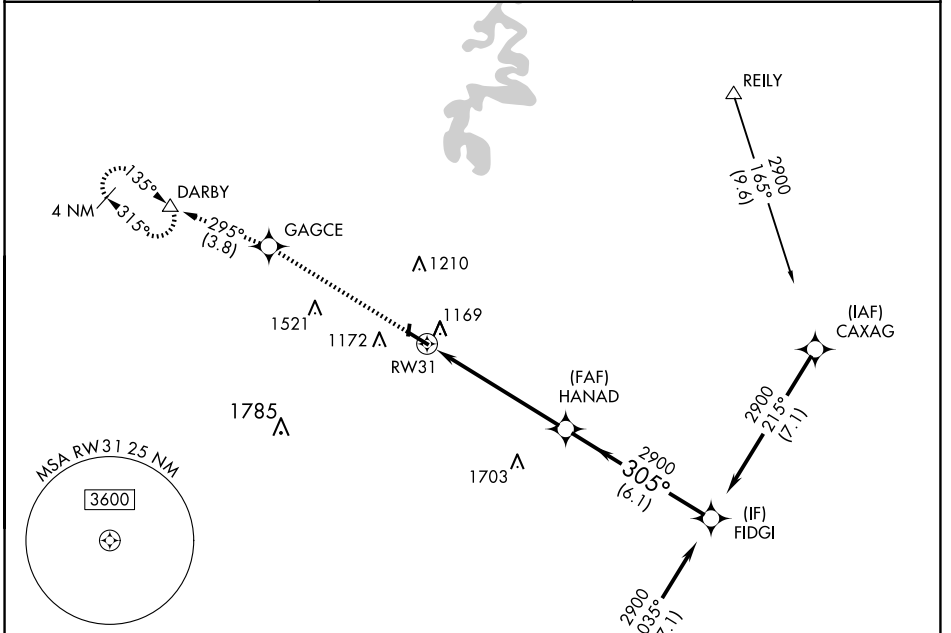


WAAS CH <b>70506</b> <b>W31A</b>	APP CRS <b>305°</b>	Rwy Ldg TDZE <b>1016</b> Apt Elev <b>1022</b>	<b>5000</b>
--	------------------------	---	-------------

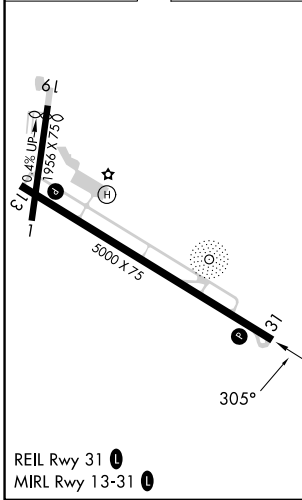
# RNAV (GPS) RWY 31

STUART POWELL FLD (DVK)

RNP APCH - GPS.		MISSED APPROACH: Climb to 3000 direct GAGCE and on track 295° to DARBY and hold.
AWOS-3 <b>128.325</b>	LEXINGTON APP CON <b>120.15 259.3</b>	UNICOM <b>122.8 (CTAF) 0</b>



ELEV 1022	TDZE 1016
-----------	-----------



3000	GAGCE	Ir 295°	DARBY	HANAD	FIDGI
↑	✧	△			
	1.5 NM to RW31	2900	305°	2900	2900
	1.5 NM	4.4 NM	6.1 NM		
CATEGORY	A	B	C	D	
LPV DA	1216-1		200 (200-1)		
LNAV/VNAV DA	1492-1 $\frac{3}{8}$		476 (500-1 $\frac{1}{8}$ )		GP 3.00° TCH 30
LNAV MDA	1520-1	504 (500-1)	1520-1 $\frac{3}{8}$	504 (500-1 $\frac{1}{8}$ )	
<input checked="" type="checkbox"/> CIRCLING	1520-1 498 (500-1)	1680-1 658 (700-1)	1720-2 698 (700-2)	1840-2 $\frac{3}{4}$ 818 (900-2 $\frac{3}{4}$ )	

SE-1, 16 APR 2026 to 14 MAY 2026

SE-1, 16 APR 2026 to 14 MAY 2026