

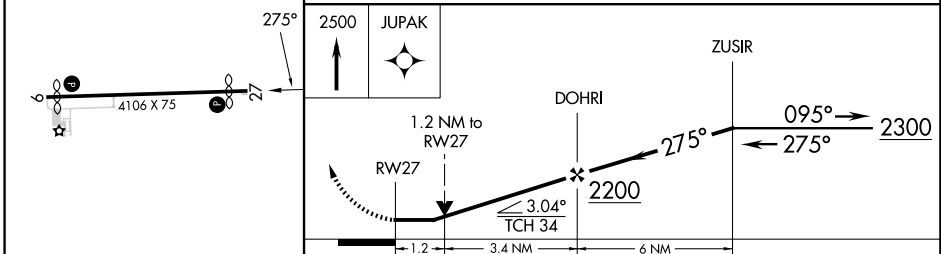
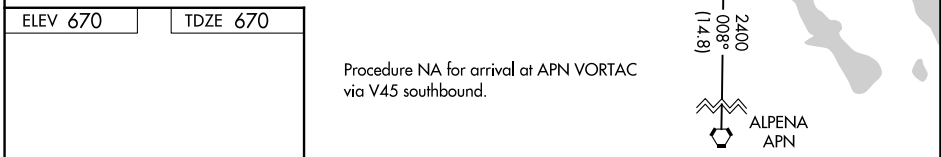
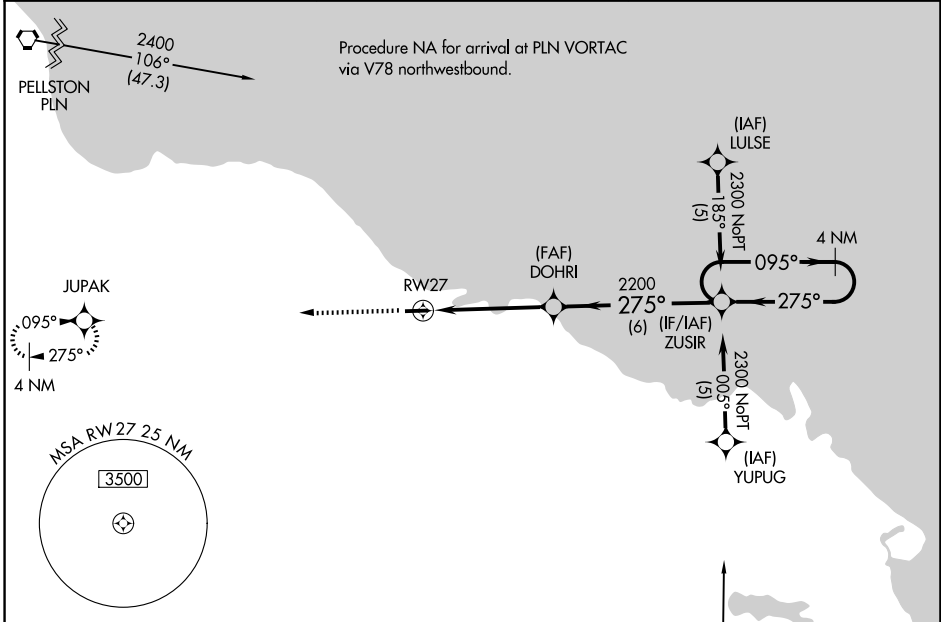
APP CRS 275°	Rwy Ldg TDZE Apt Elev	3727 670 670
------------------------	-----------------------------	---

RNAV (GPS) RWY 27

PRESQUE ISLE COUNTY (PZQ)

<p>▼ DME/DME RNP-0.3 NA. Circling NA at night to Rwy 9. ▲ NA If local altimeter setting not received, use Alpena County Rgnl altimeter setting and increase all MDAs 60 feet. VDP NA with Alpena County Rgnl altimeter setting.</p>	<p>MISSED APPROACH: Climb to 2500 direct JUPAK and hold.</p>
---	--

<p>AWOS-3P 118.125</p>	<p>ALPENA APP CON ★ 128.425 379.3</p>	<p>CTAF 122.9</p>
-----------------------------------	--	------------------------------



CATEGORY	A	B	C	D
LNAV MDA	1100-1	430 (500-1)	1100-1¼ 430 (500-1¼)	NA
CIRCLING	1200-1 530 (600-1)	1240-1 570 (600-1)	1260-1½ 590 (600-1½)	NA

EC-1, 16 APR 2026 to 14 MAY 2026

EC-1, 16 APR 2026 to 14 MAY 2026

REIL Rws 9 and 27
MIRL Rwy 9-27