

WAAS CH 56447 W26A	APP CRS 255°	Rwy Ldg TDZE Apt Elev	3200 464 464
--	------------------------	-----------------------------	---

RNAV (GPS) RWY 26

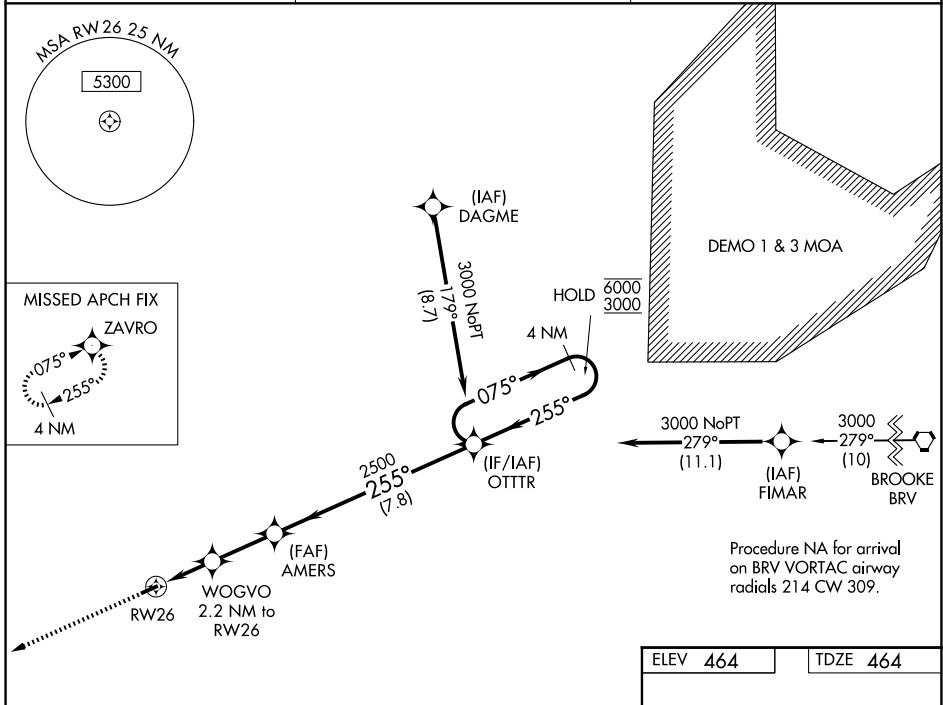
ORANGE COUNTY (OMH)

RNP APCH - GPS.

Procedure NA at night. Rwy 26 helicopter visibility reduction below 1SM NA.
For uncompensated Baro-VNAV systems, LNAV/VNAV NA below -15°C or above 54°C.

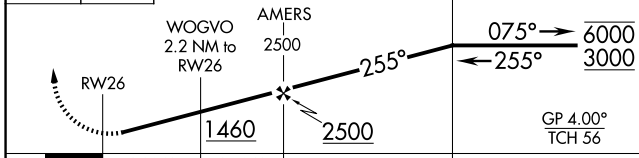
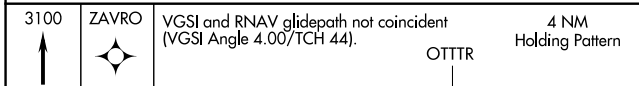
MISSED APPROACH:
 Climb to 3100 direct ZAVRO and hold.

AWOS-3 118.075	POTOMAC APP CON 132.85 323.125	UNICOM 122.8 (CTAF) 0
--------------------------	--	---------------------------------



NE-3, 16 APR 2026 to 14 MAY 2026

NE-3, 16 APR 2026 to 14 MAY 2026



CATEGORY	A	B	C	D
LPV DA	808-1	344 (400-1)		NA
LNAV/VNAV DA	914-1 $\frac{3}{8}$	450 (500-1 $\frac{3}{8}$)		NA
LNAV MDA	1000-1	536 (600-1)		NA
CIRCLING	1320-1 $\frac{1}{4}$	856 (900-1 $\frac{1}{4}$)		NA

ELEV 464	TDZE 464
----------	----------

