

APP CRS	Rwy Ldg	<b>3200</b>
<b>075°</b>	TDZE	<b>461</b>
	Apt Elev	<b>464</b>

# RNAV (GPS) RWY 8

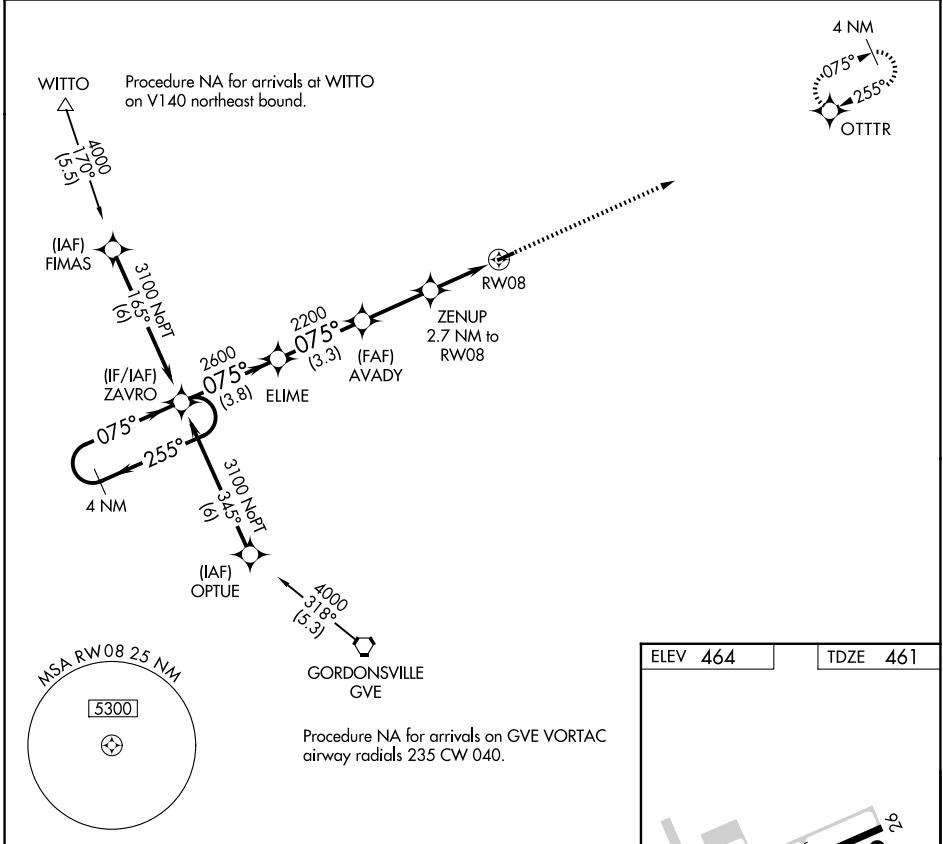
ORANGE COUNTY (OMH)

RNP APCH - GPS.

**V** Circling Rwy 26 NA at night. When local altimeter setting not received, use Charlottesville altimeter setting and increase all MDA 80 feet. Rwy 8 helicopter visibility reduction below SM NA.

**MISSED APPROACH:**  
Climb to 3000 direct OTTR and hold.

AWOS-3 <b>118.075</b>	POTOMAC APP CON <b>132.85 323.125</b>	UNICOM <b>122.8 (CTAF) 0</b>
--------------------------	--	---------------------------------



NE-3, 16 APR 2026 to 14 MAY 2026

NE-3, 16 APR 2026 to 14 MAY 2026

4 NM Holding Pattern		Visual Segment - Obstacles.		3000	OTTR
ZAVRO		ELIME	AVADY	ZENUP	RWY 8
3100	255°	2600	2200	1340	
	075°				
		3.8 NM	3.3 NM	2.7 NM	2.7 NM
CATEGORY	A	B	C	D	
LNAV MDA	1040-1	579 (600-1)		NA	
CIRCLING	1300-1¼	836 (900-1¼)		NA	

