

VORTAC GVE <b>115.6</b> Chan <b>103</b>	APP CRS <b>026°</b>	Rwy Ldg TDZE Apt Elev	<b>N/A</b> <b>N/A</b> <b>464</b>
---	------------------------	-----------------------------	--

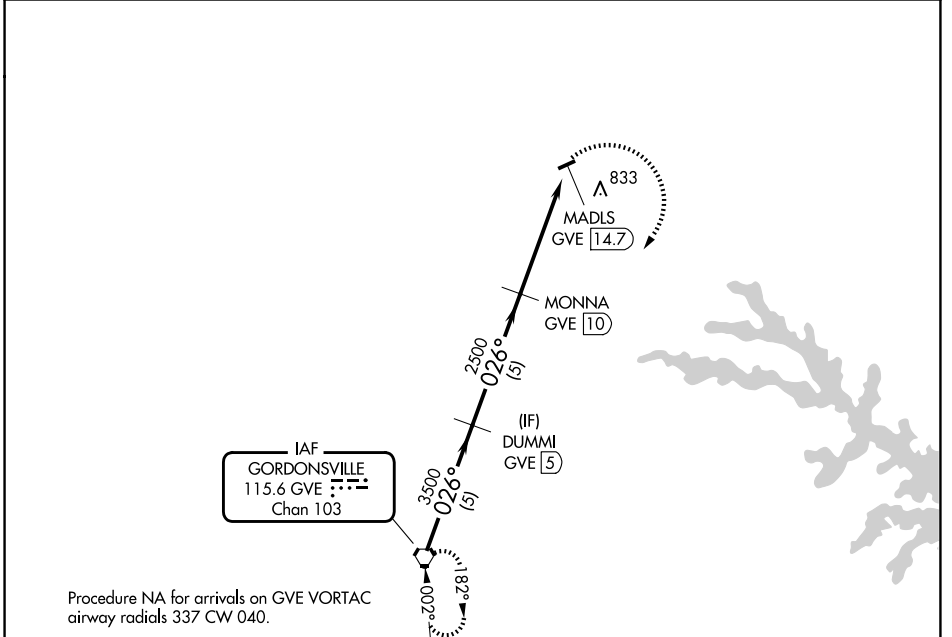
# VOR/DME-A

ORANGE COUNTY (OMH)

**⚠** Circling to Rwy 26 NA at night. When local altimeter setting not received, use Charlottesville altimeter setting and increase all MDA 80 feet.  
**⚠** Helicopter visibility reduction below 1 SM NA.

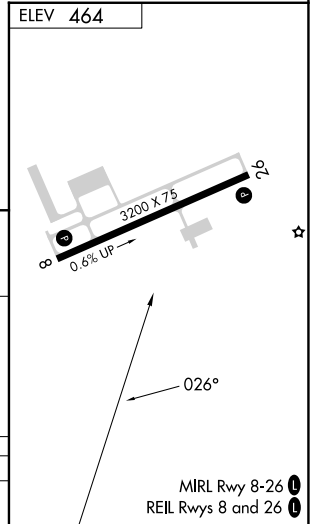
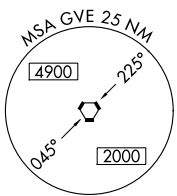
MISSED APPROACH: Climbing right turn to 3500 direct GVE VORTAC and hold.

AWOS-3 <b>118.075</b>	POTOMAC APP CON <b>132.85 323.125</b>	UNICOM <b>122.8</b> (CTAF) <b>📻</b>
--------------------------	--	--



NE-3, 16 APR 2026 to 14 MAY 2026

NE-3, 16 APR 2026 to 14 MAY 2026



	GVE VORTAC	DUMMI GVE <b>5</b>	MONNA GVE <b>10</b>	MADLS GVE <b>14.7</b>	3500 GVE
	3500	3500	2500		
	026°	026°			
	5 NM	5 NM	4.7 NM		
CATEGORY	A	B	C	D	
CIRCLING	2000-1¼ 1536 (1600-1¼)	2000-1½ 1536 (1600-1½)	NA		