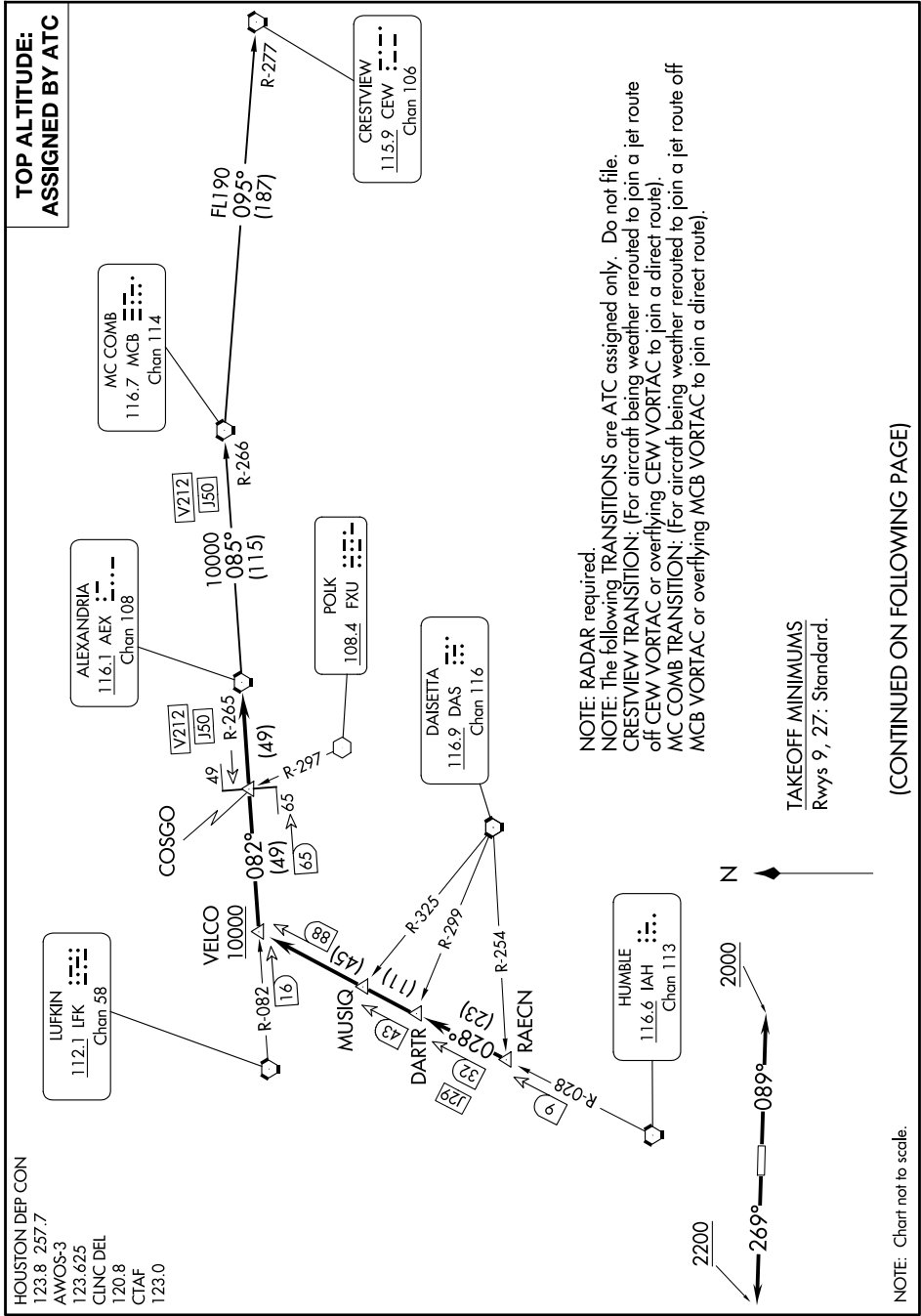


ALEXANDRIA THREE DEPARTURE

SC-5, 16 APR 2026 to 14 MAY 2026



HOUSTON DEP CON
 123.8 257.7
 AWOS-3
 123.625
 CLNC DEL
 120.8
 CTAF
 123.0

**TOP ALTITUDE:
ASSIGNED BY ATC**

NOTE: RADAR required.
 NOTE: The following TRANSITIONS are ATC assigned only. Do not file.
 CRESTVIEW TRANSITION: (For aircraft being weather routed to join a jet route off CEW VORTAC or overlying CEW VORTAC to join a direct route).
 MC COMB TRANSITION: (For aircraft being weather routed to join a jet route off MCB VORTAC or overlying MCB VORTAC to join a direct route).

TAKEOFF MINIMUMS
 Rwy 9, 27: Standard.

(CONTINUED ON FOLLOWING PAGE)

NOTE: Chart not to scale.

ALEXANDRIA THREE DEPARTURE

SC-5, 16 APR 2026 to 14 MAY 2026