

|  |                        |                             |   |
|--|------------------------|-----------------------------|---|
| WAAS<br>CH <b>77741</b><br><b>W17A</b> | APP CRS<br><b>175°</b> | Rwy Ldg<br>TDZE<br>Apt Elev | <b>4020</b><br><b>1468</b><br><b>1468</b> |
|--|------------------------|-----------------------------|---|

# RNAV (GPS) RWY 17

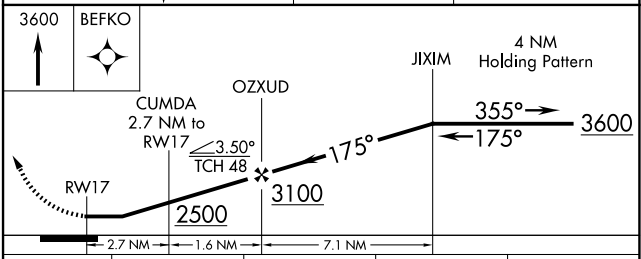
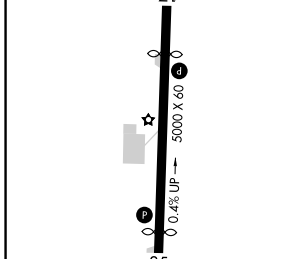
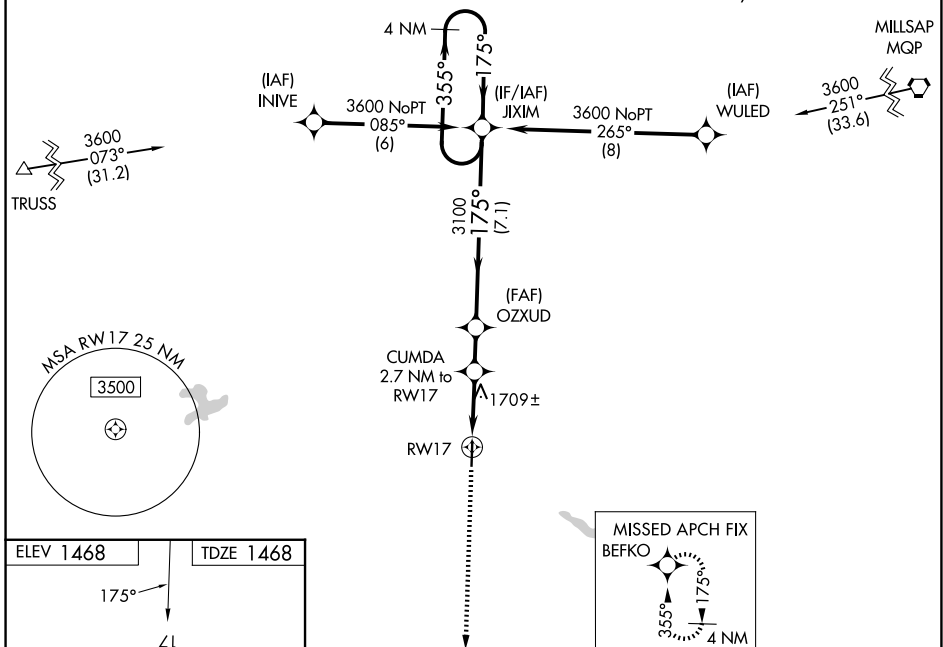
EASTLAND MUNI (ETN)

**⚠** Helicopter visibility reduction below 1 SM NA. DME/DME RNP-0.3 NA. When local altimeter setting not received, use Breckenridge altimeter setting: increase all MDAs 80 feet; increase LP and LNAV visibility Cat C ¼ SM and Circling visibility Cat C ¼ SM. Straight-in Rwy 17 NA at night, Circling Rwy 17 NA at night.

**⚠** MISSED APPROACH: Climb to 3600 direct BEFKO and hold.

|                           |  |                                 |
|---------------------------|--|---------------------------------|
| AWOS-3PT<br><b>118.45</b> | FORT WORTH CENTER<br><b>135.375 354.05</b> | UNICOM<br><b>122.8 (CTAF) 0</b> |
|---------------------------|--|---------------------------------|

Procedure NA for arrival on MQP VORTAC  
airway radials 161 CW 330.



| CATEGORY | A                     | B                             | C                             | D  |
|----------|-----------------------|-------------------------------|-------------------------------|----|
| LP MDA   | 2040-1                | 572 (600-1)                   | 2040-1 5/8<br>572 (600-1 5/8) | NA |
| LNAV MDA | 2040-1                | 572 (600-1)                   | 2040-1 5/8<br>572 (600-1 5/8) | NA |
| CIRCLING | 2120-1<br>652 (700-1) | 2320-1 1/4<br>852 (900-1 1/4) | 2320-2 1/2<br>852 (900-2 1/2) | NA |

MIRL Rwy 17-35 **0**

SC-2, 16 APR 2026 to 14 MAY 2026

SC-2, 16 APR 2026 to 14 MAY 2026