

APP CRS <b>355°</b>	Rwy Ldg TDZE Apt Elev	<b>4580</b> <b>1458</b> <b>1468</b>
------------------------	-----------------------------	---

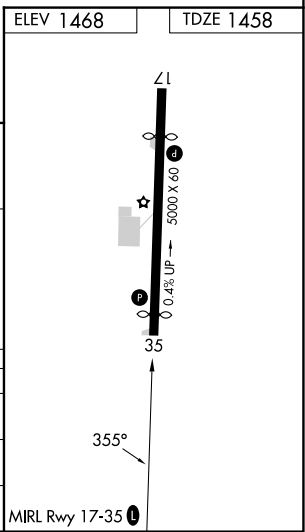
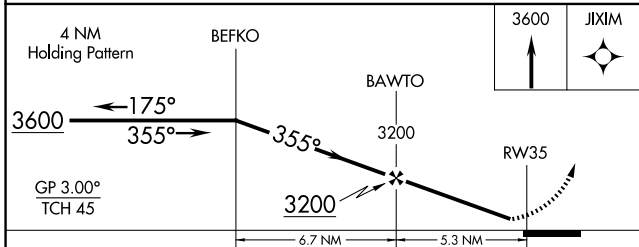
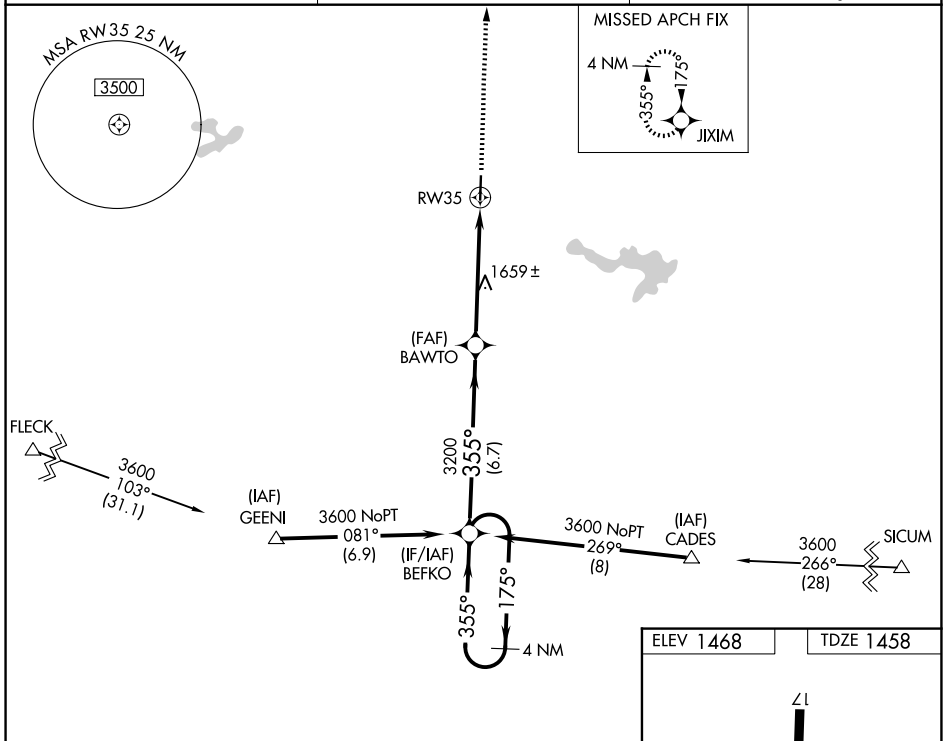
# RNAV (GPS) RWY 35

EASTLAND MUNI (ETN)

**⚠** For uncompensated Baro-VNAV systems, LNAV/VNAV NA below -22°C (-7°F) or above 54°C (130°F).  
**⚠** DME/DME RNP-0.3 NA. When local altimeter setting not received, use Breckenridge altimeter setting; increase LNAV/VNAV DA to 1846 feet and all visibilities ½ SM; increase all MDAs 80 feet and LNAV and Circling visibility Cat C ¼ SM. Baro-VNAV NA when using Breckenridge altimeter setting. Circling Rwy 17 NA at night. Helicopter visibility reduction below ¼ SM NA.

**MISSED APPROACH:** Climb to 3600 direct JIXIM and hold.

AWOS-3PT <b>118.45</b>	FORT WORTH CENTER <b>135.375 354.05</b>	UNICOM <b>122.8 (CTAF) ①</b>
---------------------------	--	---------------------------------



CATEGORY	A	B	C	D
LNAV/ VNAV DA	1777-1 319 (400-1)			NA
LNAV MDA	1980-1	522 (600-1)	1980-1½ 522 (600-1½)	NA
CIRCLING	2120-1 652 (700-1)	2320-1¼ 852 (900-1¼)	2320-2½ 852 (900-2½)	NA

SC-2, 16 APR 2026 to 14 MAY 2026

SC-2, 16 APR 2026 to 14 MAY 2026