

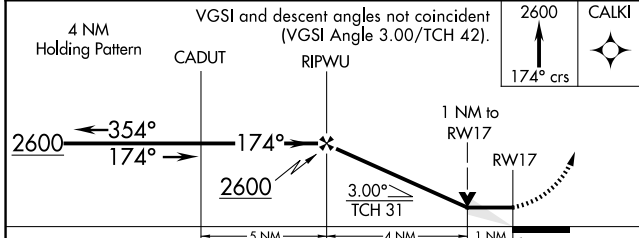
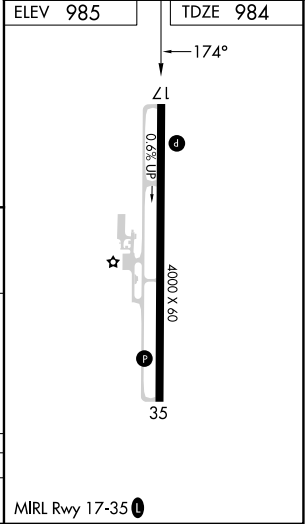
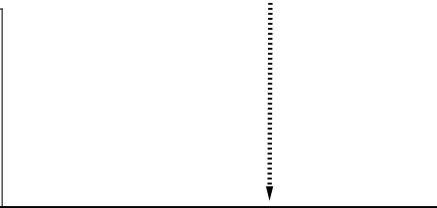
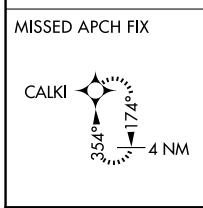
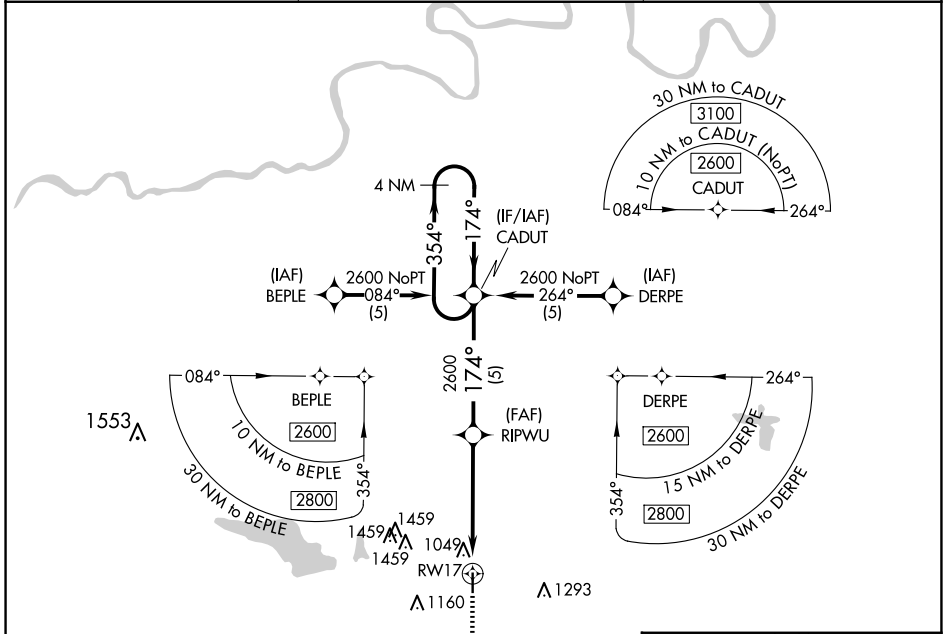
APP CRS	Rwy Idg	4000
174°	TDZE	984
	Apt Elev	985

RNAV (GPS) RWY 17

CHANDLER RGNL (CQB)

RNP APCH.	MISSED APPROACH: Climb to 2600 via 174° course to CALKI WP and hold.
<p>▼ When local altimeter setting not received, use Shawnee altimeter setting and increase all MDA 80 feet; increase LNAV Cat C visibility 1/8 SM.</p> <p>▲</p>	

AWOS-3PT 119.275	KANSAS CITY CENTER 127.8 319.1	CTAF 122.9
----------------------------	------------------------------------------	----------------------



CATEGORY	A	B	C	D
LNAV MDA	1300-1	316 (400-1)		NA

SC-1, 16 APR 2026 to 14 MAY 2026

SC-1, 16 APR 2026 to 14 MAY 2026