

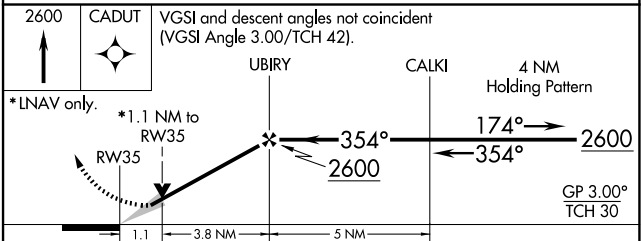
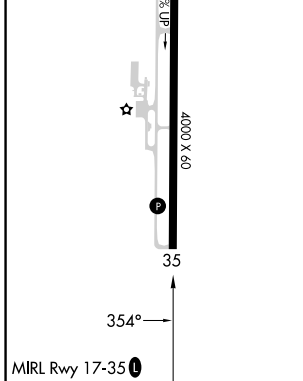
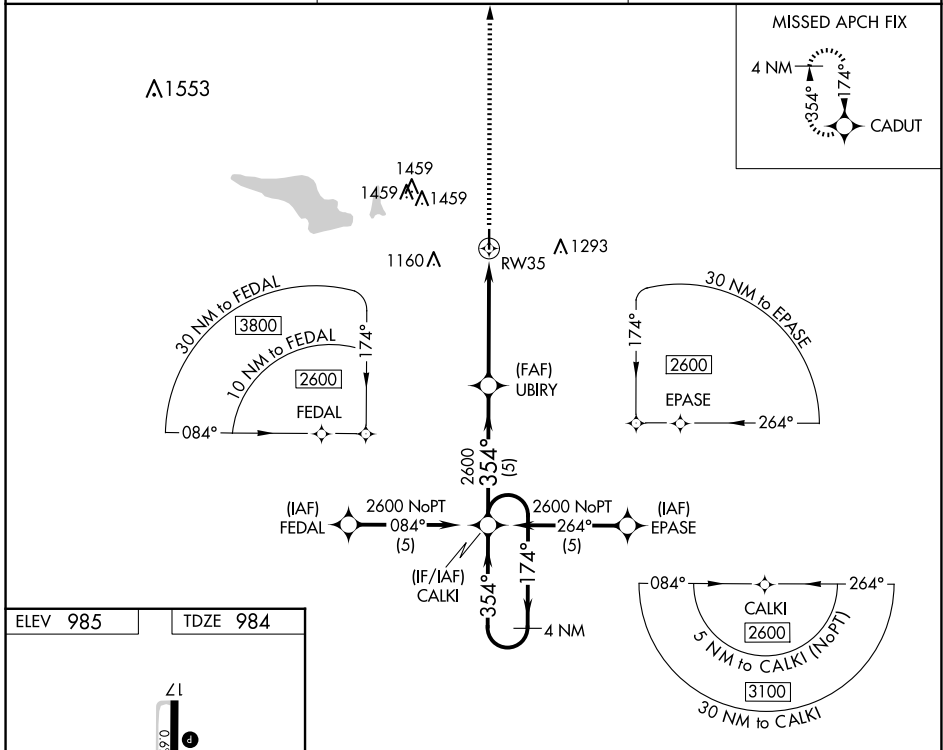
APP CRS 354°	Rwy Idg 4000
	TDZE 984
	Apt Elev 985

RNAV (GPS) RWY 35

CHANDLER RGNL (CQB)

RNP APCH.	MISSED APPROACH: Climb to 2600 direct CADUT and hold.
<p>▼ When local altimeter setting not received, use Shawnee altimeter setting and increase all MDA 80 feet; increase LNAV Cat C visibility 1/8 SM. VDP NA with Shawnee Rgnl altimeter setting.</p> <p>▲ NA</p>	

AWOS-3PT 119.275	KANSAS CITY CENTER 127.8 319.1	CTAF 122.9
----------------------------	--	----------------------



CATEGORY	A	B	C	D
GLS PA DA	NA			
LNAV/VNAV DA	NA			
LNAV MDA	1320-1	335 (400-1)	NA	

SC-1, 16 APR 2026 to 14 MAY 2026

SC-1, 16 APR 2026 to 14 MAY 2026