

VOR/DME BJC 115.4 Chan 101	APP CRS 203°	Rwy Ldg TDZE Apt Elev	N/A N/A 5119
--	------------------------	-----------------------------	---

VOR-A

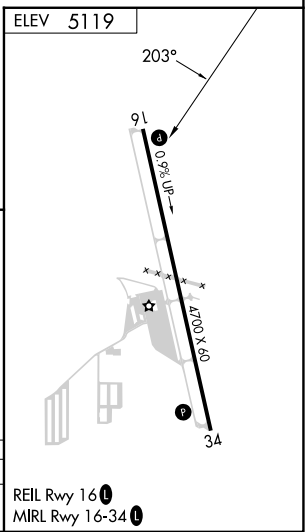
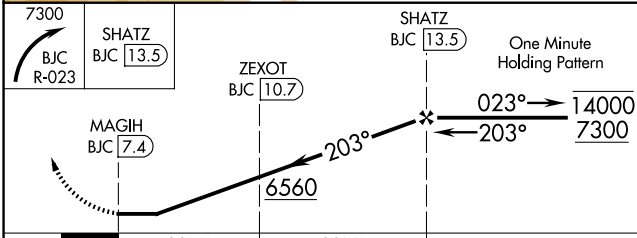
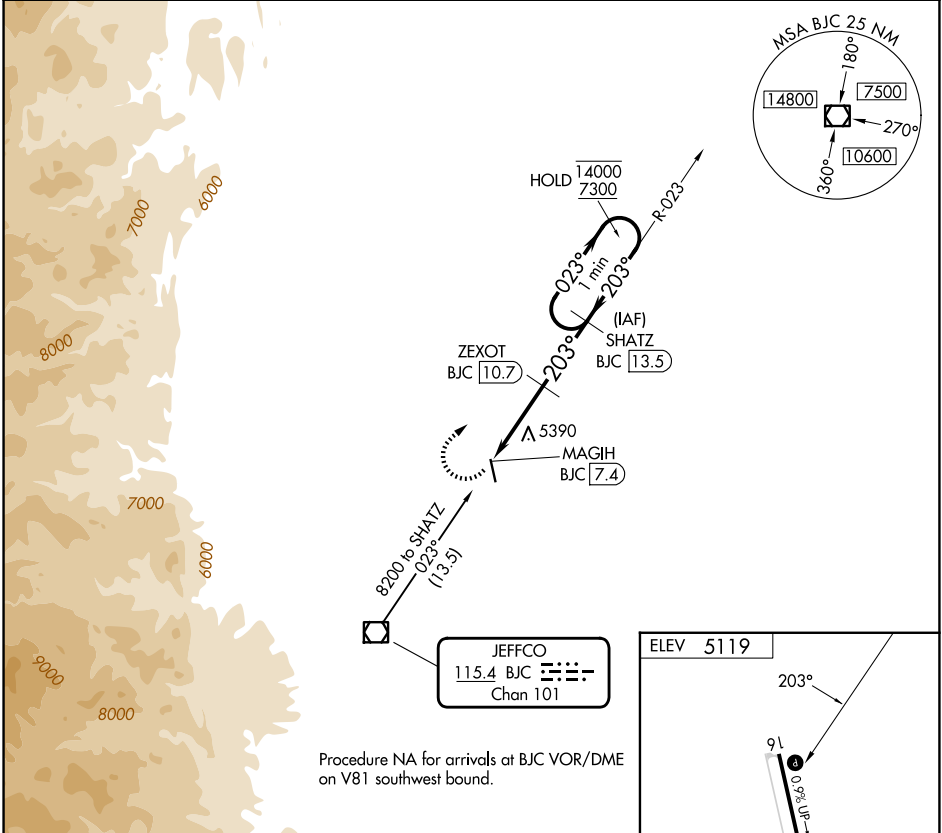
ERIE MUNI (EIK)

DME required.

⚠

MISSED APPROACH: Climbing right turn to 7300 on BJC VOR/DME R-023 to SHATZ/13.5 DME and hold, continue climb-in-hold to 7300.

AWOS-3PT 133.825	DENVER APP CON 125.125 263.025	UNICOM 123.0 (CTAF)
----------------------------	--	-------------------------------



CATEGORY	A	B	C	D
CIRCLING	5700-1 581 (600-1)	5880-1 761 (800-1)	5880-2¼ 761 (800-2¼)	NA

SW-1, 16 APR 2026 to 14 MAY 2026

SW-1, 16 APR 2026 to 14 MAY 2026

REIL Rwy 16
MIRL Rwy 16-34