

APP CRS <b>304°</b>	Rwy Idg <b>3600</b>
	TDZE <b>1466</b>
	Apt Elev <b>1468</b>

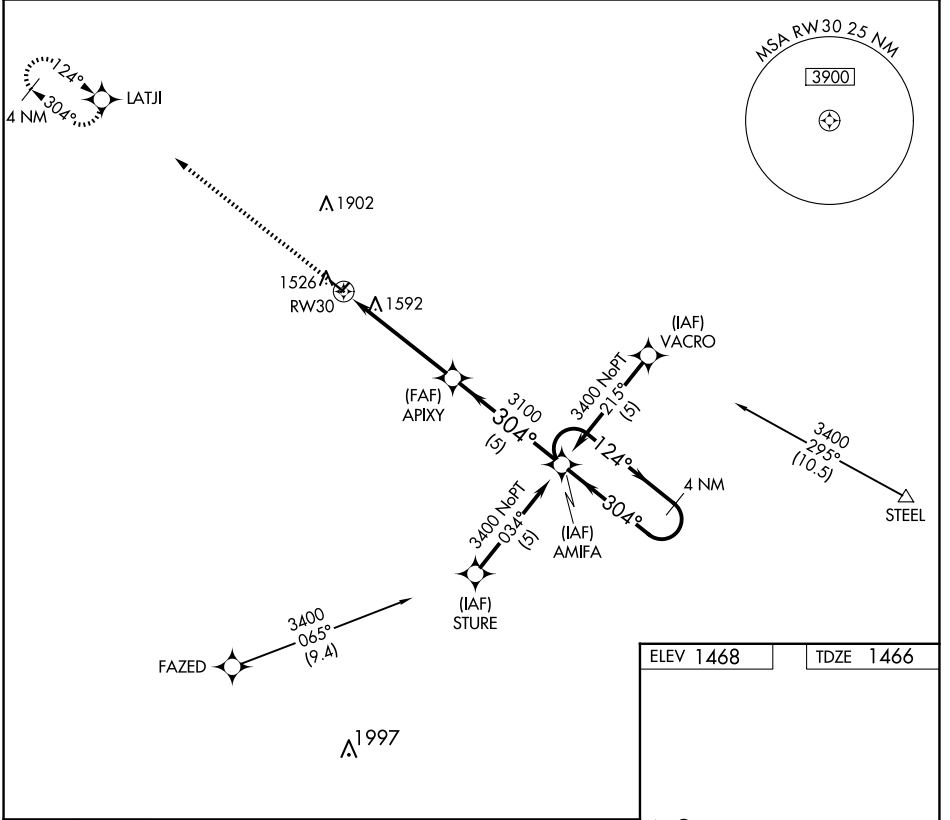
# GPS RWY 30

HEBRON MUNI (HJH)

**▽** When local altimeter setting not received, use Beatrice altimeter setting.  
**△ NA** Circling Rwy 3, 21 NA. Rwy 30 helicopter visibility reduction below 3/4 SM NA. VDP NA when using Beatrice altimeter setting.

**MISSED APPROACH:** Climb to 3400 direct LATJI WP and hold.

AWOS-3 <b>118.525</b>	MINNEAPOLIS CENTER <b>126.4 317.7</b>	CTAF <b>122.9</b> <b>⓪</b>
--------------------------	--	-------------------------------



NC-2, 16 APR 2026 to 14 MAY 2026

NC-2, 16 APR 2026 to 14 MAY 2026

ELEV 1468	TDZE 1466
-----------	-----------

Detailed diagram of the runway layout. RWY 30 is shown with a width of 2513 x 150 feet and a 0-7% upward slope. RWY 12-30 and RWY 150 are also indicated. A 4 NM Holding Pattern is shown above RWY 30. ELEV 1468 and TDZE 1466 are noted.

3400	LATJI	AMIFA	4 NM Holding Pattern
↑	✦		
1.7 NM to RW30	APIXY		
3.00° TCH 40			
1.7	3.3 NM	5 NM	
CATEGORY	A	B	C
S-30	2060-1	594 (600-1)	NA
CIRCLING	2100-1	632 (700-1)	NA