

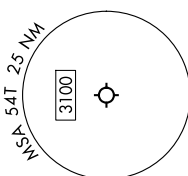
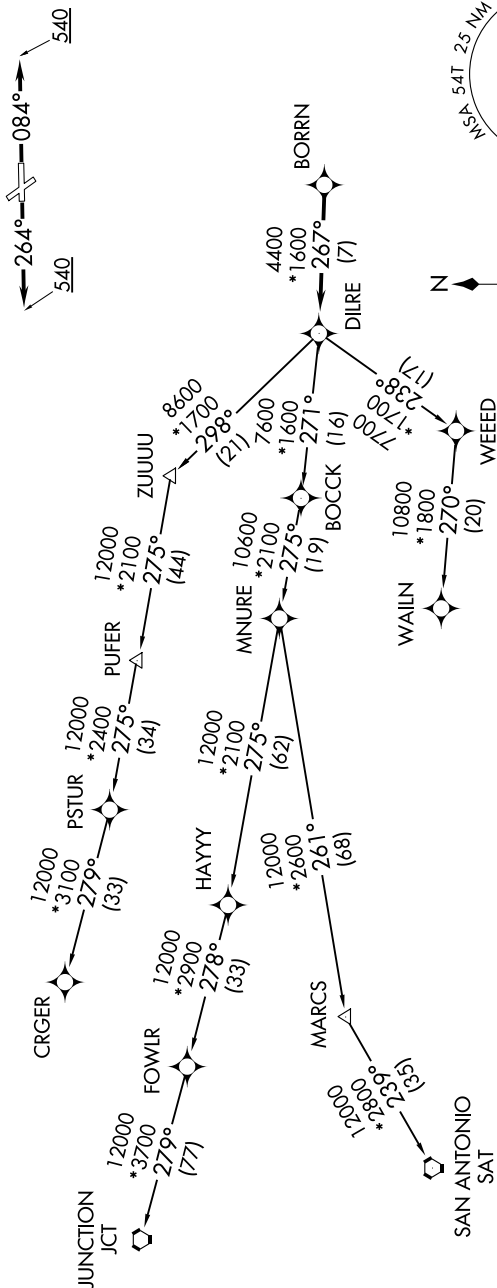
BORRN SIX DEPARTURE (RNAV)

**TOP ALTITUDE:
ASSIGNED BY ATC**

RNAV 1 - DME/DME/IRU or GPS.
RADAR required.

TAKEOFF MINIMUMS

Rwys 14, 32: NA - Environmental.
Rwys 8, 26: Standard with minimum climb
of 500'/NM to 540.



NOTE: Chart not to scale.

NOTE: CRGR-TRANSITION ATC assigned only
for aircraft departing 54T, AXH, EFD, GLS,
HPY, IWS, LBX, LVJ, SGR, TME, T00, T41.

(CONTINUED ON FOLLOWING PAGE)

BORRN SIX DEPARTURE (RNAV)