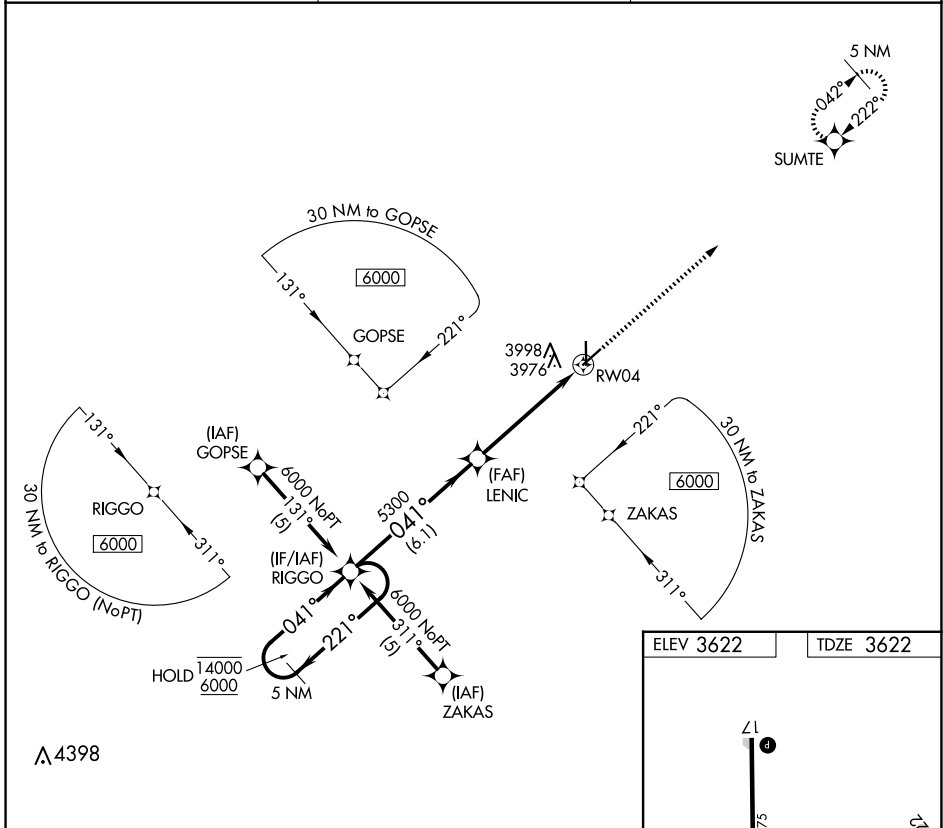


RNAV (GPS) RWY 4
ELKHART-MORTON COUNTY (EHA)

APP CRS 041°	Rwy ldg TDZE Apt Elev	4900 3622 3622
------------------------	-----------------------------	---

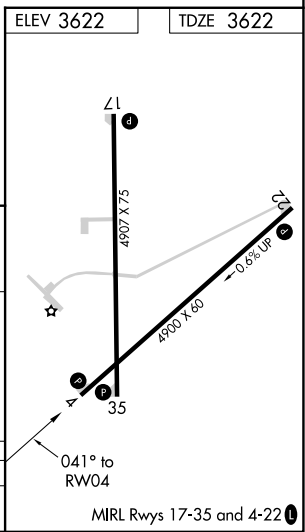
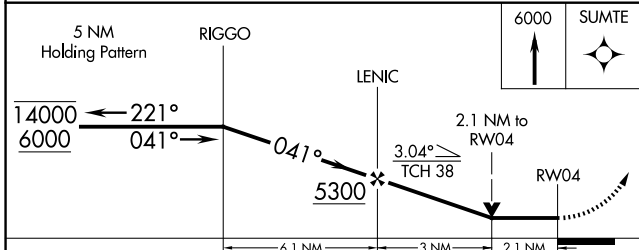
RNP APCH-GPS.	MISSED APPROACH: Climb to 6000 direct SUMTE and hold.
Rwy 4 helicopter visibility reduction below 3/4 SM NA.	

AWOS-3P 118.025	KANSAS CITY CENTER 134.0 257.625	UNICOM 122.8 (CTAF) 0
---------------------------	--	---------------------------------



NC-2, 16 APR 2026 to 14 MAY 2026

NC-2, 16 APR 2026 to 14 MAY 2026



CATEGORY	A	B	C	D
LNAV MDA	4340-1	718 (800-1)	4340-2	718 (800-2)