

# KNIGHTS THREE DEPARTURE

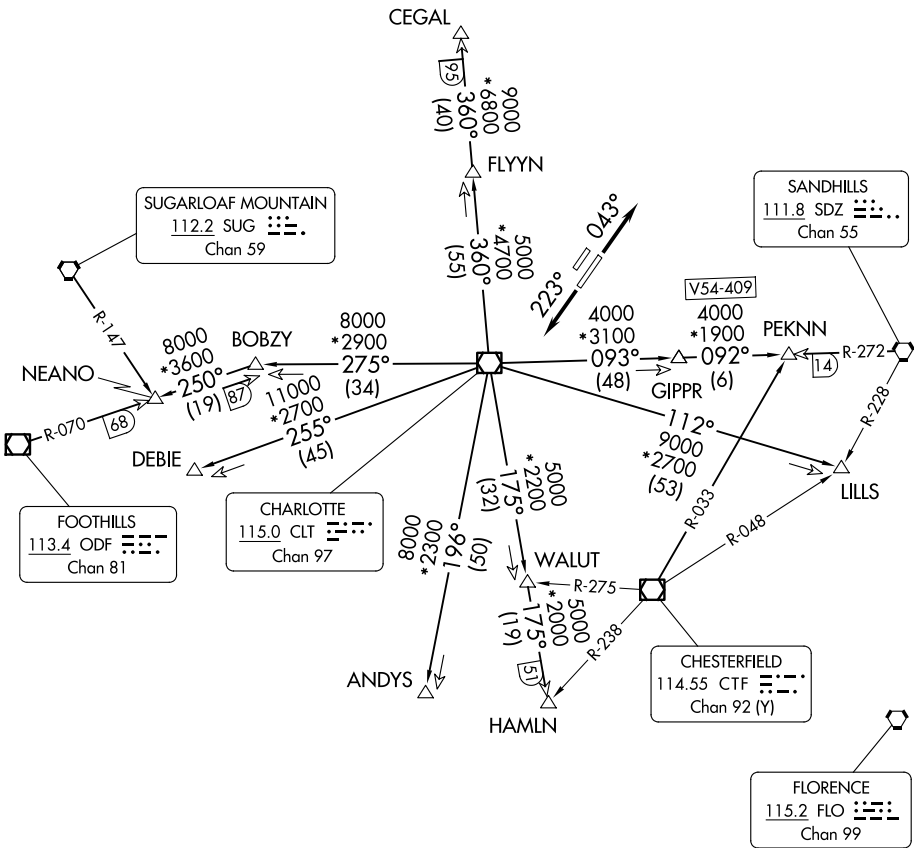
CHARLOTTE DEP CON  
128.325 307.8  
AWOS-3  
128.175  
CLNC DEL  
121.75 254.375  
GND CON  
121.75 254.375  
STANLEY COUNTY TOWER\*  
126.275 (CTAF) 291.9

**TOP ALTITUDE:  
3000**

RADAR and DME required.

### TAKEOFF MINIMUMS

Rwys 4L, 22R: NA-Environmental.  
Rwy 22L: Standard.  
Rwy 4R: 300-1¼ or standard with minimum  
climb of 315' per NM to 1000.



SE-2, 16 APR 2026 to 14 MAY 2026

SE-2, 16 APR 2026 to 14 MAY 2026

NOTE: For propeller aircraft only.  
NOTE: Turboprops: Operate in a manner that will  
result in best forward speed and climb rate.  
NOTE: Transponder code will be issued via  
Charlotte clearance delivery.

(CONTINUED ON FOLLOWING PAGE)

NOTE: Chart not to scale.

# KNIGHTS THREE DEPARTURE