

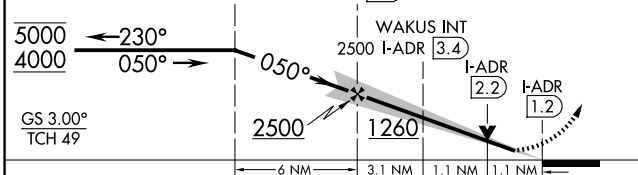
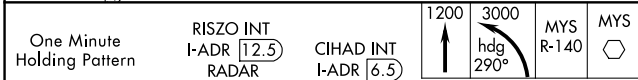
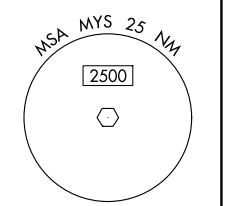
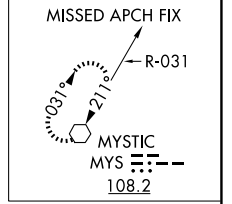
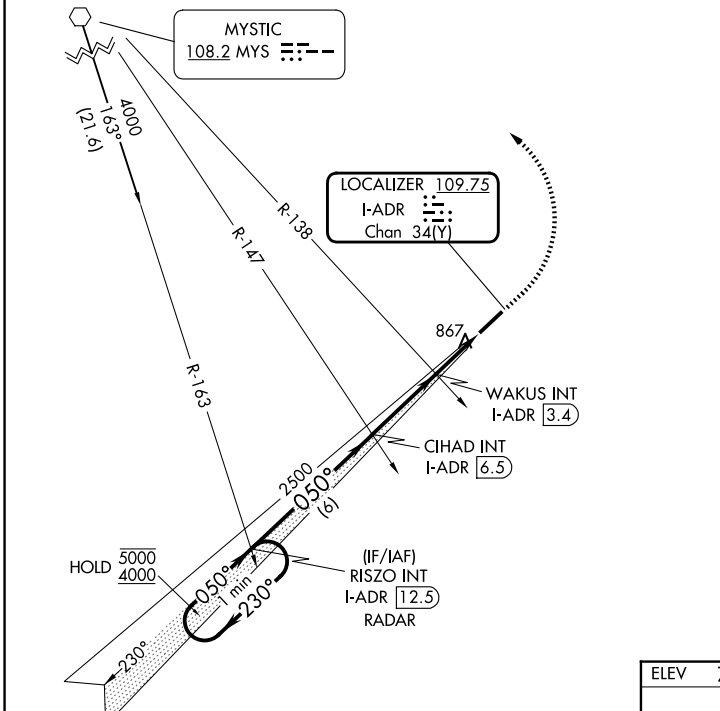
LOC/DME I-ADR 109.75 Chan 34 (Y)	APP CRS 050°	Rwy Ldg TDZE Apt Elev 6001 768 776
--	------------------------	--

ILS or LOC RWY 5

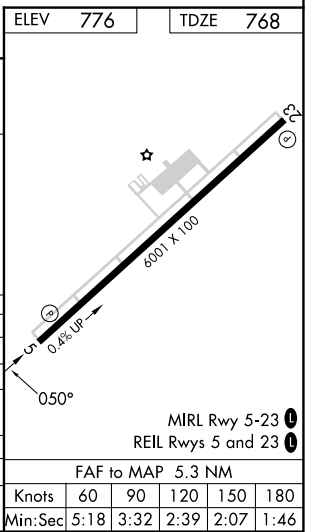
ADDINGTON FLD (EKK)

⚠ MISSED APPROACH: Climb to 1200 then climbing left turn to 3000 on heading 290° and MYS R-140 to MYS VOR and hold.

AWOS-3 118.55	LOUISVILLE APP CON 123.675 327.0	CLNC DEL 119.45	UNICOM 123.075 (CTAF) 0
-------------------------	--	---------------------------	--



CATEGORY	A	B	C	D
S-ILS 5	968-3/4		200 (200-3/4)	
S-LOC 5	1260-1	492 (500-1)	1260-1 3/8	492 (500-1 3/8)
CIRCLING	1260-1	484 (500-1)	1420-1 3/4 644 (700-1 3/4)	1760-3 984 (1000-3)
WAKUS FIX MINIMUMS (DUAL VOR RECEIVERS OR DME REQUIRED)				
S-LOC 5	1140-1 372 (400-1)			
CIRCLING	1240-1 464 (500-1)	1260-1 484 (500-1)	1420-1 3/4 644 (700-1 3/4)	1760-3 984 (1000-3)



SE-1, 16 APR 2026 to 14 MAY 2026

SE-1, 16 APR 2026 to 14 MAY 2026

ELEV	776	TDZE	768		
Knots	60	90	120	150	180
Min:Sec	5:18	3:32	2:39	2:07	1:46